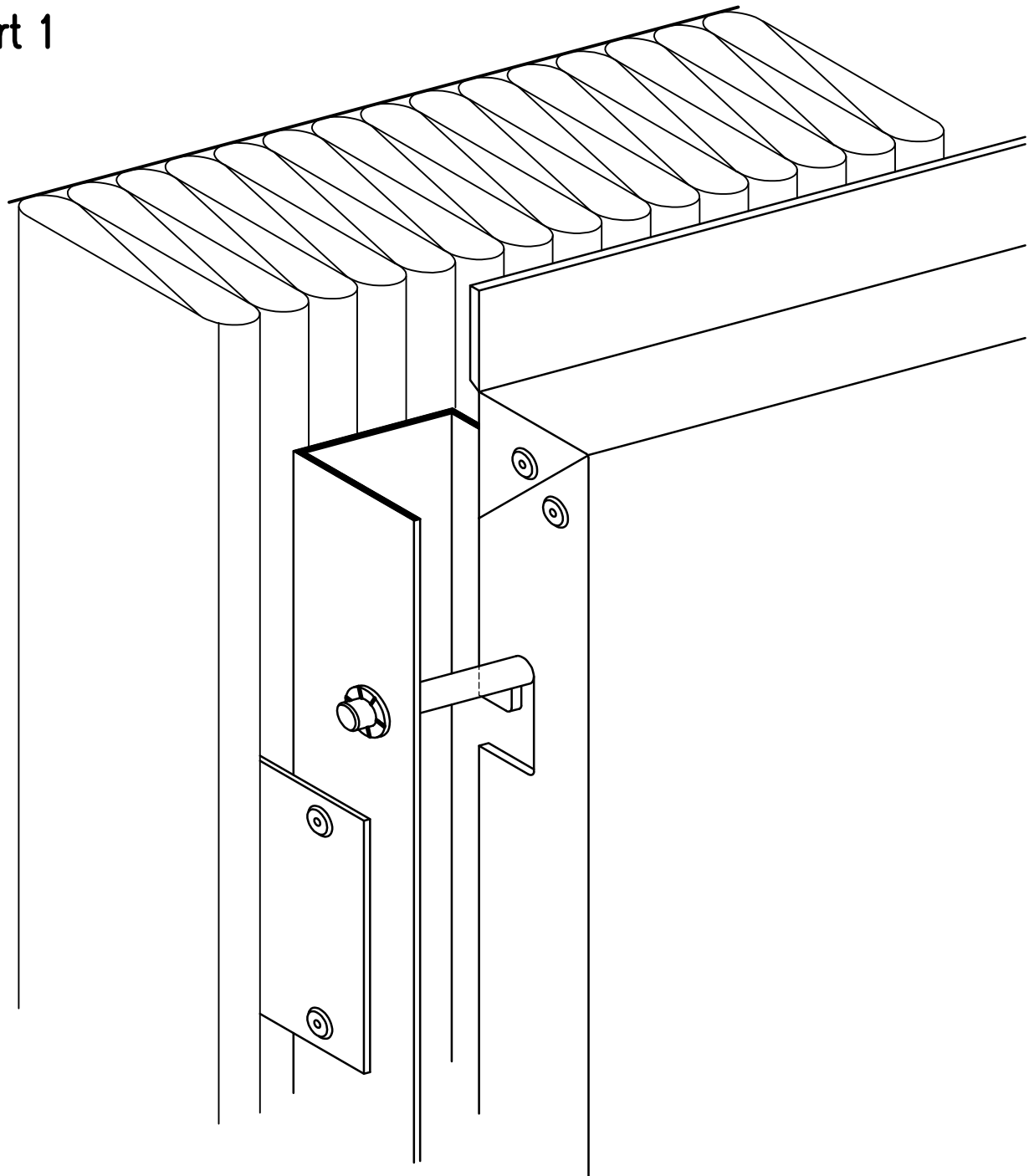


ALUCOBOND Design Manual

Fascia, suspended Tray Panels

– Vertical Panel Layout

Part 1



- | | |
|-------------------------------------|-----------------|
| • Description | Page 1.1 |
| • Extruded Sections and Accessories | Page 2.1 – 2.5 |
| • Examples | Page 3.1 – 3.90 |

Description

Aesthetically attractive ALUCOBOND fascias can be obtained using suspended tray panels.

This method of attaching ALUCOBOND panels represents the best way of fulfilling the architectural demand for concealed fixtures.

Exploitation of this design principle permits the width of the elements butt joints to be simply matches to the desired grid layout.

The element dimensions or maximum grid dimensions depend on the available panel formats and occurring wind forces (building height).

Typical applications include details on the special design of the tray panels:

- 1.1A Standard tray panel
- 1.1B Reinforced tray panel
- 1.1C Reinforced tray panel

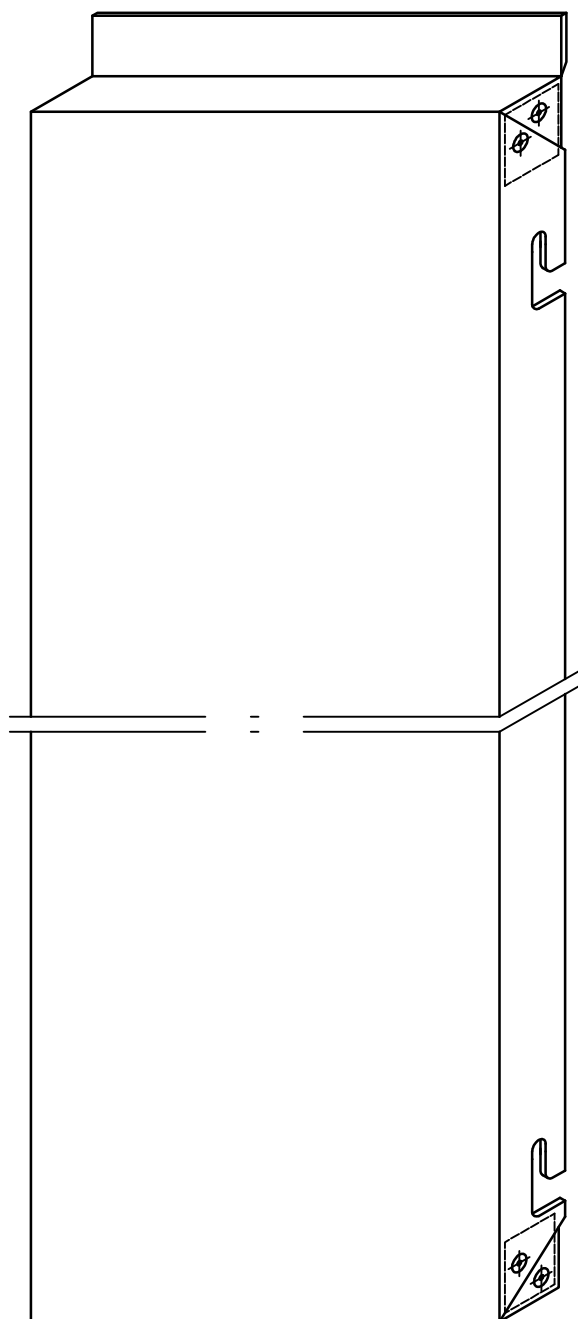
Compared with all-sheet-metal components, ALUCOBOND tray panels offer the following advantages:

- ALUCOBOND panels are delivered ready for fitting with a stove-lacquered surface finish (no subsequent painting required).
- Absolute surface flatness, even after folding.
- Folds can be made by hand (no folding machine required).
- High inherent strength of ALUCOBOND panels permits the use of tray panels with flat surfaces (no auxiliary reinforcement required for large elements).
- Low tare weight facilitates simple and rapid installation.
- No anti-drumming coating required.

Description

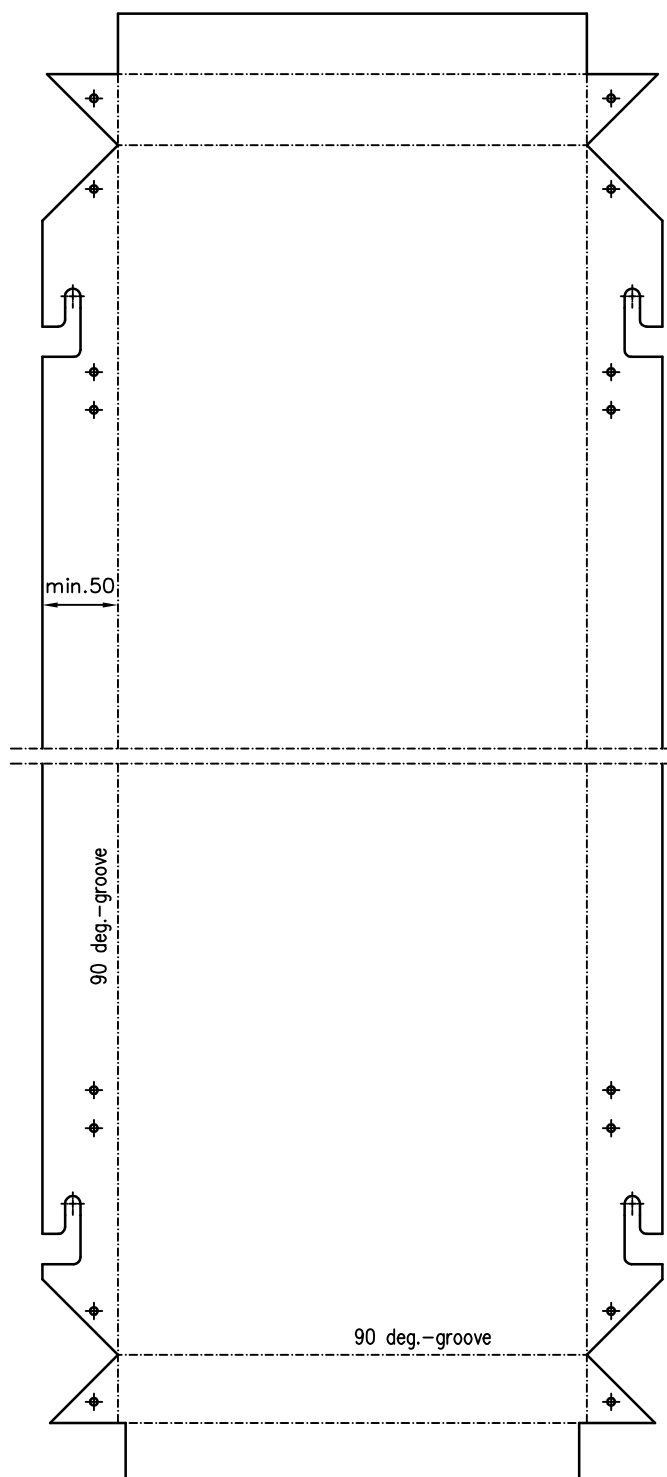
Elevation and periphery of a tray panel

A. Standard



Returns depending on statical needs.

Elevation Scale 1:5

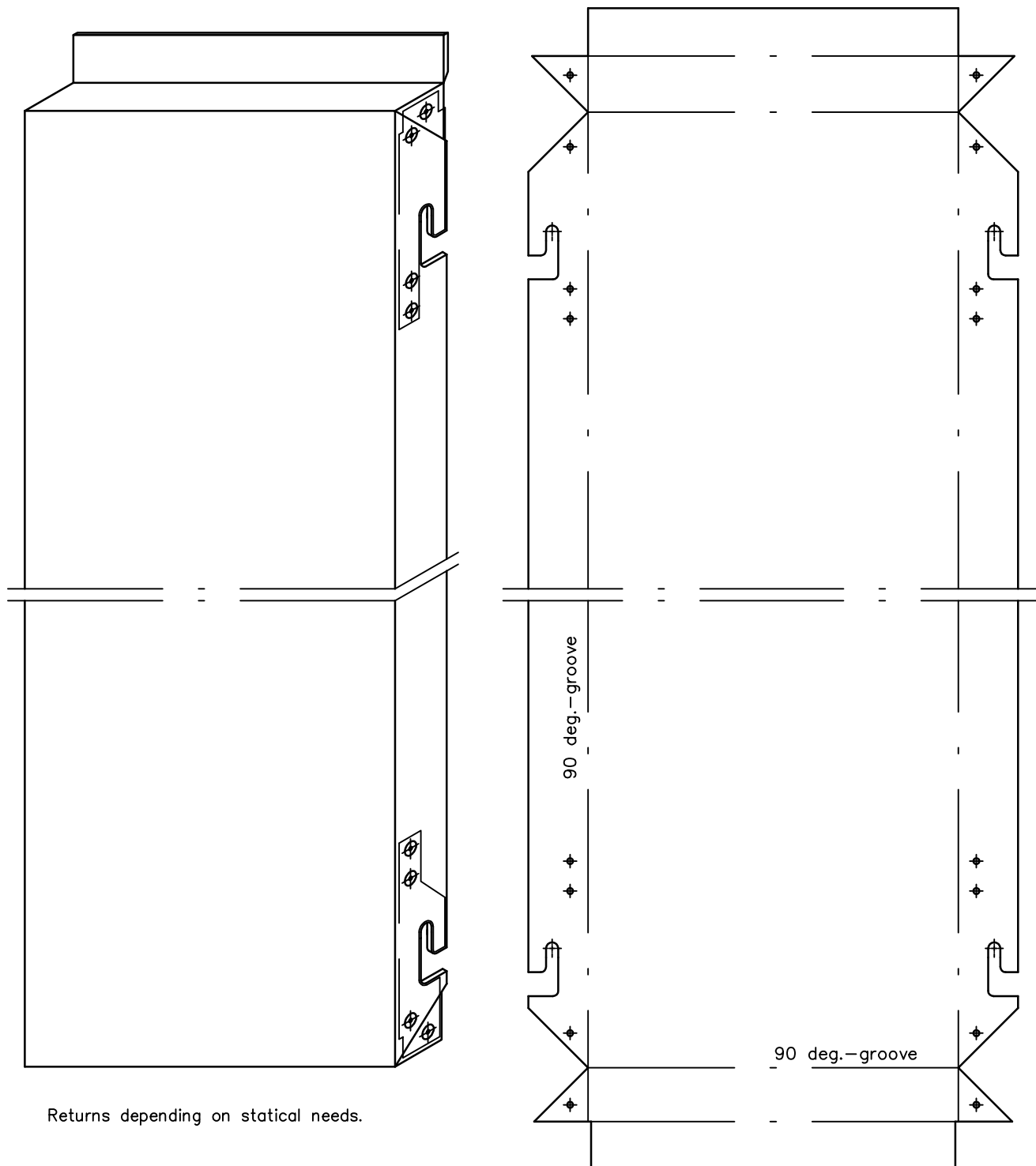


Periphery Scale 1:5

Description

Elevation and periphery of a tray panel

B. with corner sheet (depends on statical needs)



Returns depending on statical needs.

Elevation Scale 1:5

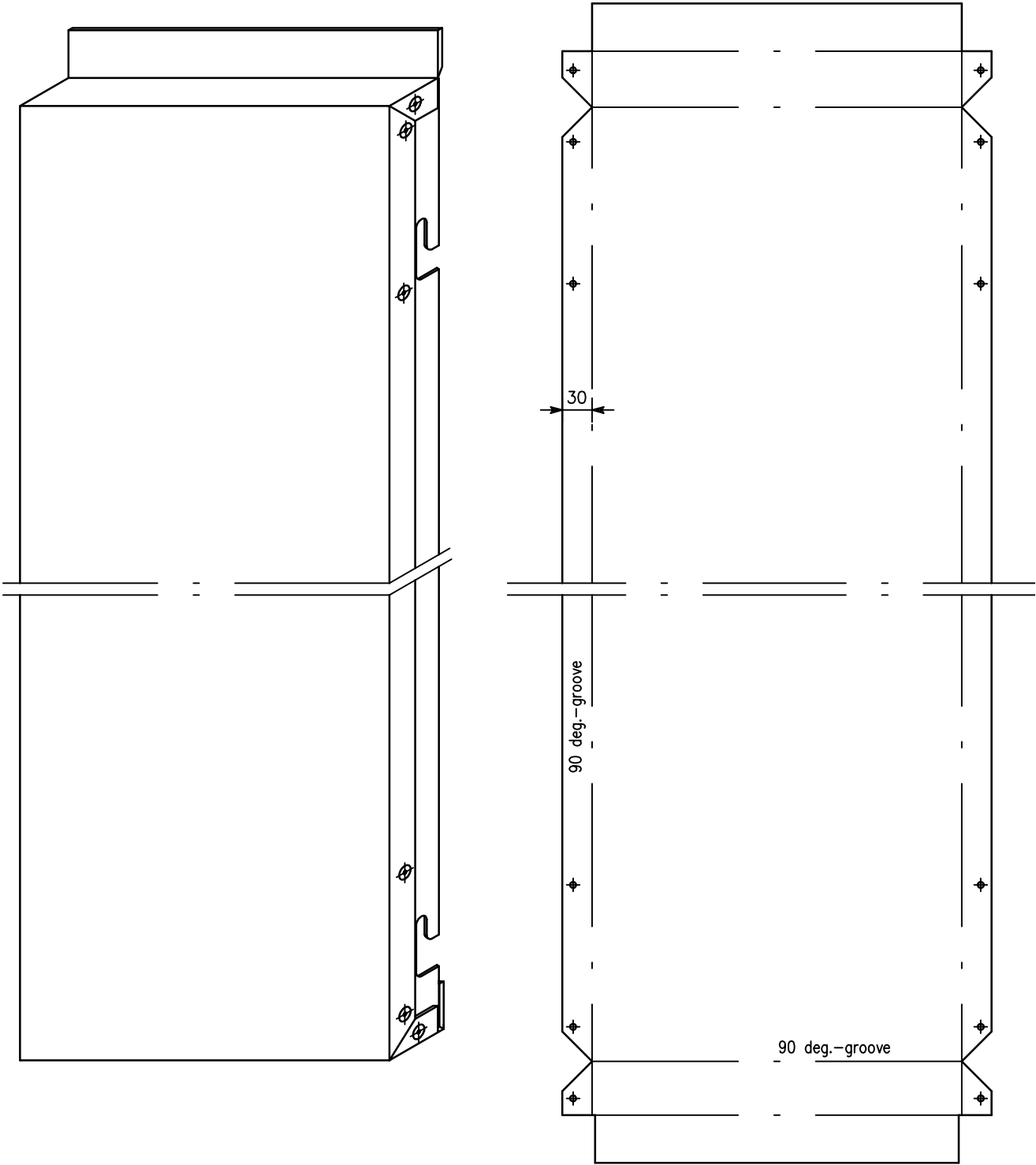
Periphery Scale 1:5

Fascia, suspended Tray Panels – Vertical Panel Layout

Description

Elevation and periphery of a tray panel

C. with suspension-sheet (depends on statical needs)

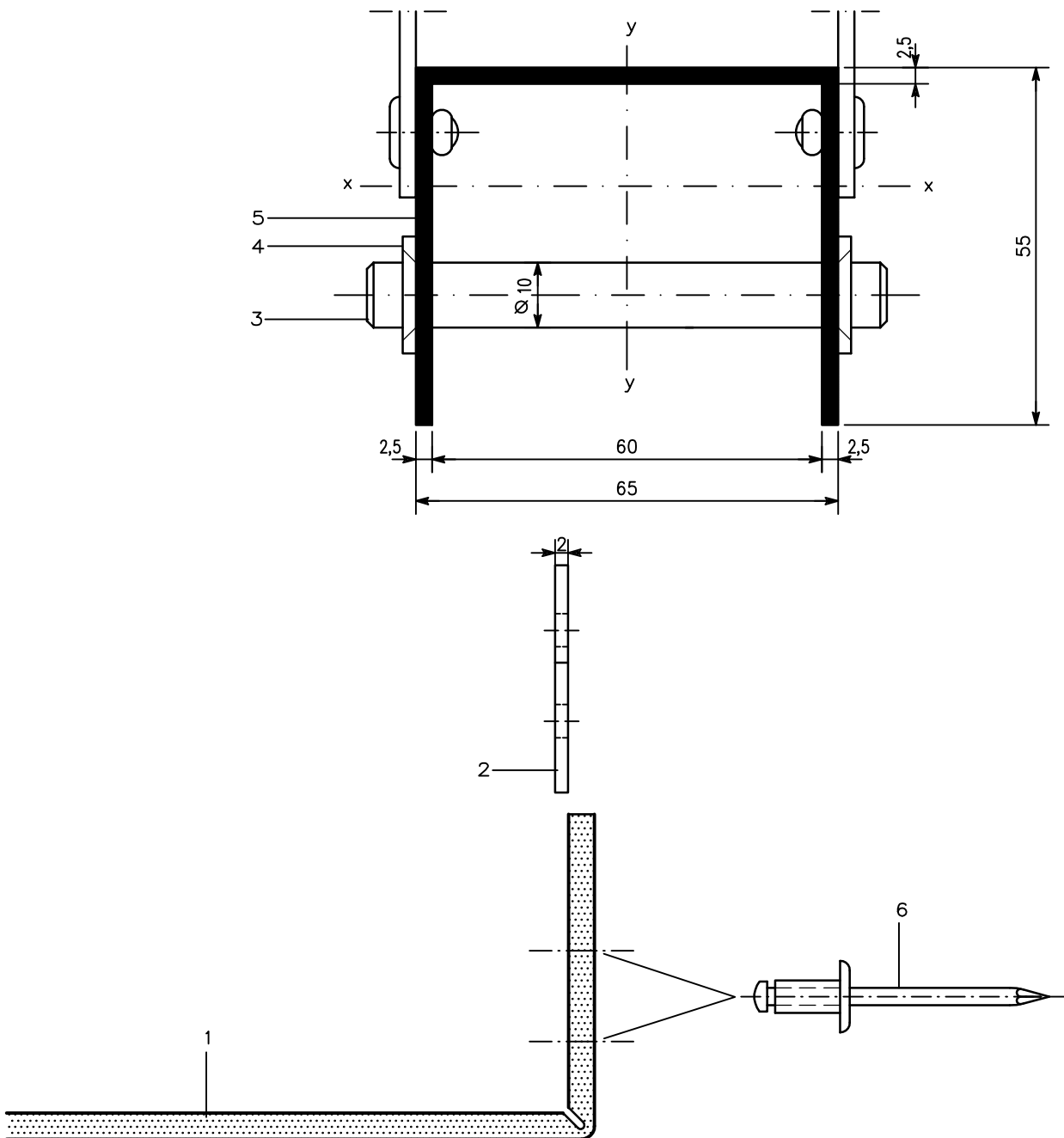


Elevation Scale 1:5

Periphery Scale 1:5

Product changes in the sense of a technical progress are reserved. All advice recommendation and information is given to the best of our knowledge but without any obligation on our part. 11.04

Extruded Sections and Accessories Scale 1:1



- 1 ALUCOBOND
- 2 Corner sheet made of EN AW-5754 (AlMg3), thickness: 2 mm
- 3 Stainless steel bolt, 10 mm dia., 80 mm length
- 4 STARLOCK quick fastener
- 5 U-Section 65/55/2,5
Weight 1147 g/m Periphery 345 mm
 $I_x = 13,63 \text{ cm}^4$, $W_x = 3,71 \text{ cm}^3$, $I_y = 31,37 \text{ cm}^4$, $W_y = 9,65 \text{ cm}^3$
- 6* Aluminium-blind rivet, with stainless steel mandrel, 5 mm dia., head-dia. 11 mm
Rivetable thickness = total material thickness plus 2 mm

* Available from competent dealer

Fascia, suspended Tray Panels – Vertical Panel Layout

Producer/Suppliers for extruded Sections and Accessories

Extruded U-section 65/55/2,5

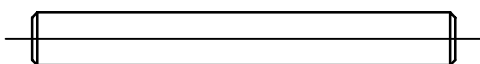


Competent dealer

Stainless steel bolt

10 mm dia., to be ground and burred

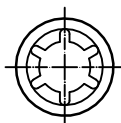
bolt length: 80 mm (for extruded U-sections 65/55/2,5)



Competent dealer

STARLOCK quick fastener stainless steel

Order No. 399 815 (for stainless steel bolt 10 mm dia.)

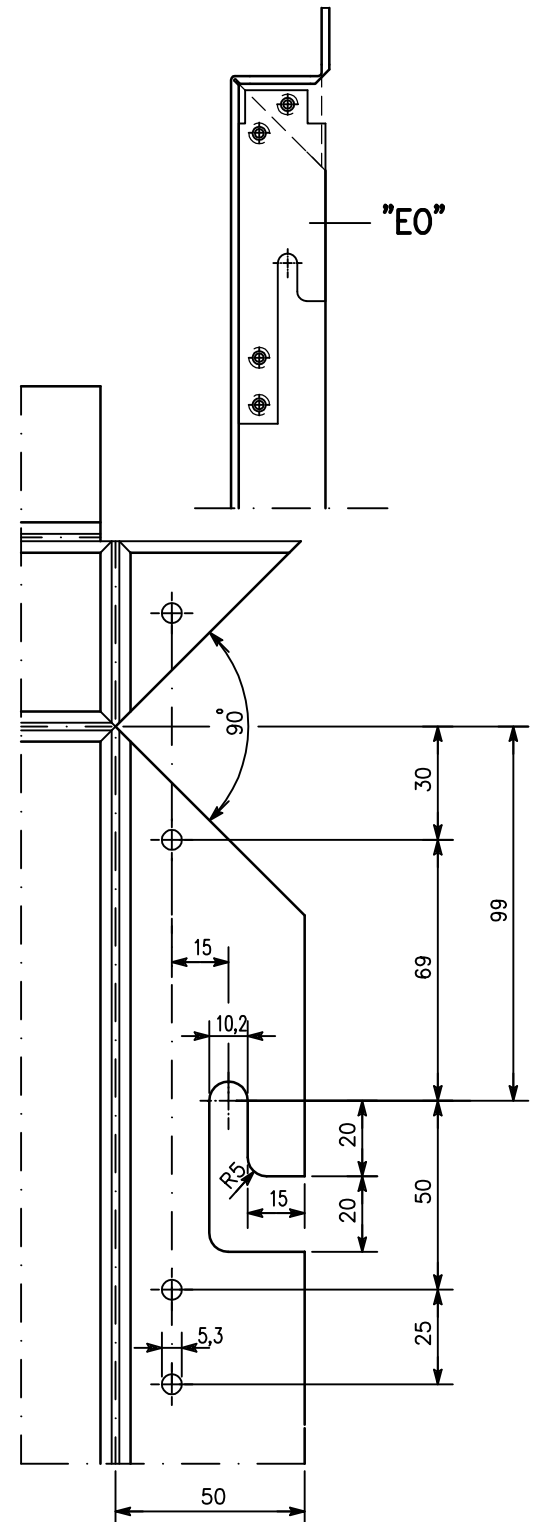
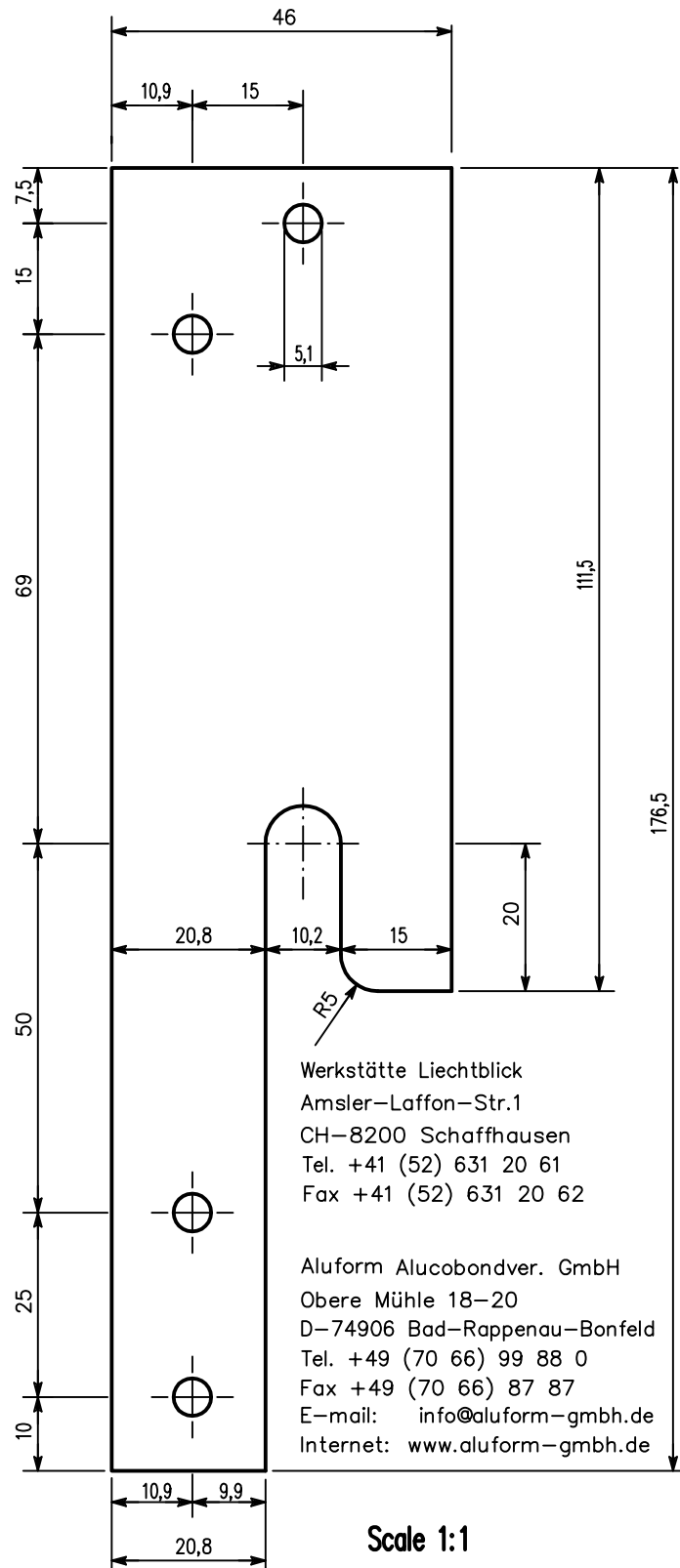


Gebr. Titgemeyer GmbH & Co KG
Hannoversche Str. 97
D-49084 Osnabrück
Tel. +49 (5 41) 58 22-0
Fax +49 (5 41) 58 22 490
Email info@titgemeyer.com
Internet www.titgemeyer.de

Tool for STARLOCK quick fastener available.

Producer/Suppliers for extruded Sections and Accessories

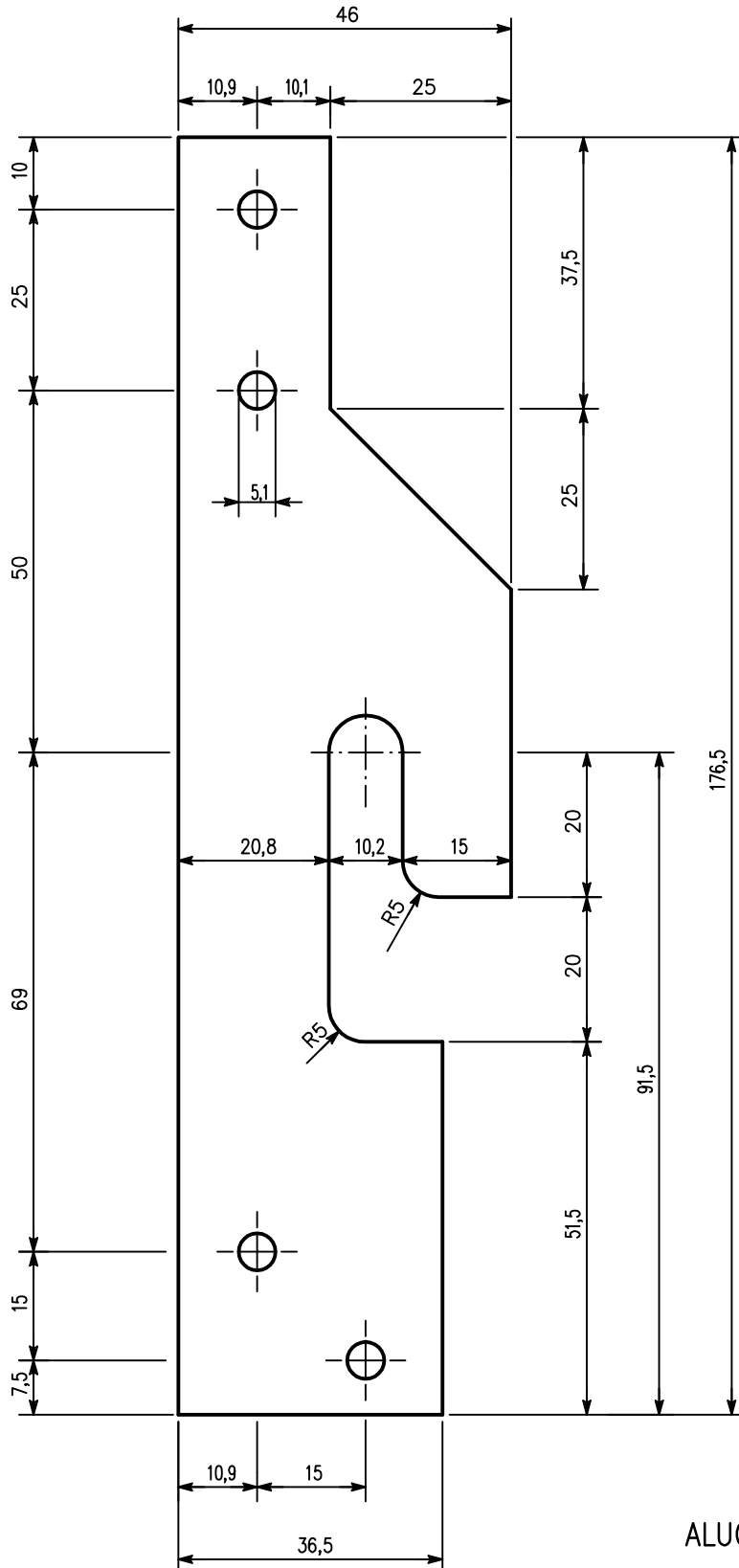
Corner sheet "EO" (for the top tray panel corner) made of EN AW-5754 (AlMg3)



ALUCOBOND punching diagramm Scale 1:2

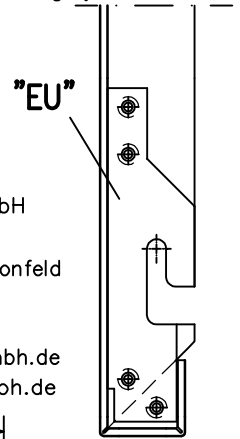
Producer/Suppliers for extruded Sections and Accessories

Corner sheet "EU" (for bottom tray panel corner) made of EN AW-5754 (AlMg3)



Werkstätte Liechtblick
 Amsler-Laffon-Str.1
 CH-8200 Schaffhausen
 Tel. +41 (52) 631 20 61
 Fax +41 (52) 631 20 62

Aluform Alucobondver. GmbH
 Obere Mühle 18-20
 D-74906 Bad-Rappenau-Bonfeld
 Tel. +49 (70 66) 99 88 0
 Fax +49 (70 66) 87 87
 E-mail: info@aluform-gmbh.de
 Internet: www.aluform-gmbh.de



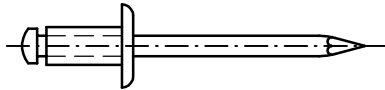
ALUCOBOND punching diagramm Scale 1:2

Producer/Suppliers for extruded Sections and Accessories

Gesipa–alu–blind rivet with stainless steel mandrel

(also available with painted head)

dia. 5 mm, head–dia. 11 or 14 mm

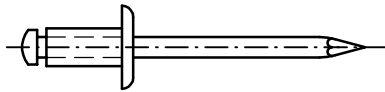


GESIPA Blindniettechnik GmbH
Nordendstr. 13–39
D–64546 Mörfelden–Walldorf
Tel. +49 (61 05) 962–0
Fax +49 (61 05) 962 287
Email Info@gesipa.com
Internet www.gesipa.com

Alu–blind rivet with painted head

(available in ALUCOBOND standard colours)

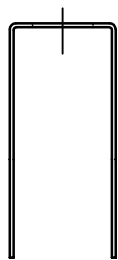
dia. 5 mm, head–dia. 14 mm



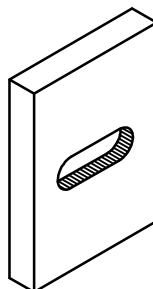
MBE GmbH
Siemensstr. 1
D–58706 Menden
Tel. +49 (23 73) 17 43 00
Fax. +49 (23 73) 17 43 011
Email info@mbe-gmbh.de
Internet www.mbe-gmbh.de

SFS Intec GmbH & Co KG
In den Schwarzwiesen
D–61440 Oberursel/TS
Tel. +49 (61 71) 70 02–0
Fax. +49 (61 71) 70 02 46
Email de.oberursel@sfsintec.biz
Internet www.sfsintec.biz

Haspo Montagetechnik GmbH
Feigelstraße 32
CH–4600 Olten
Tel. +41 (62) 212 80 42
Fax +41 (62) 212 61 65
Email info@haspo.ch
Internet www.haspo.ch

Wall bracket

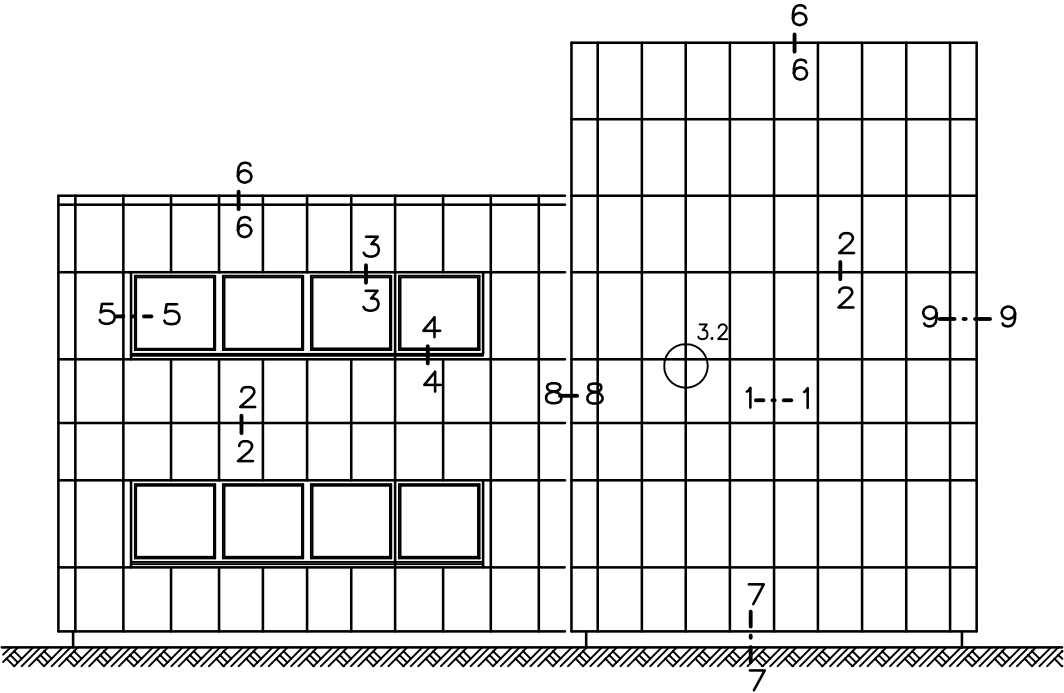
Keune Kantprofile GmbH
Ernst Stenner Str. 34
D–58675 Hemer
Tel. +49 (23 72) 94 70 50
Fax +49 (23 72) 94 70 99
Email: m.keune@keune-kantprofile.de
Internet: www.keune.de

**Plastic board
for thermal separation**

HG Schlaugat GmbH
Eschenweg 12
D–79798 Jestetten
Tel. +49 (77 45) 96 700
Fax +49 (77 45) 96 701
Email: schlaugat@t-online.de
Internet: www.thermostop.de

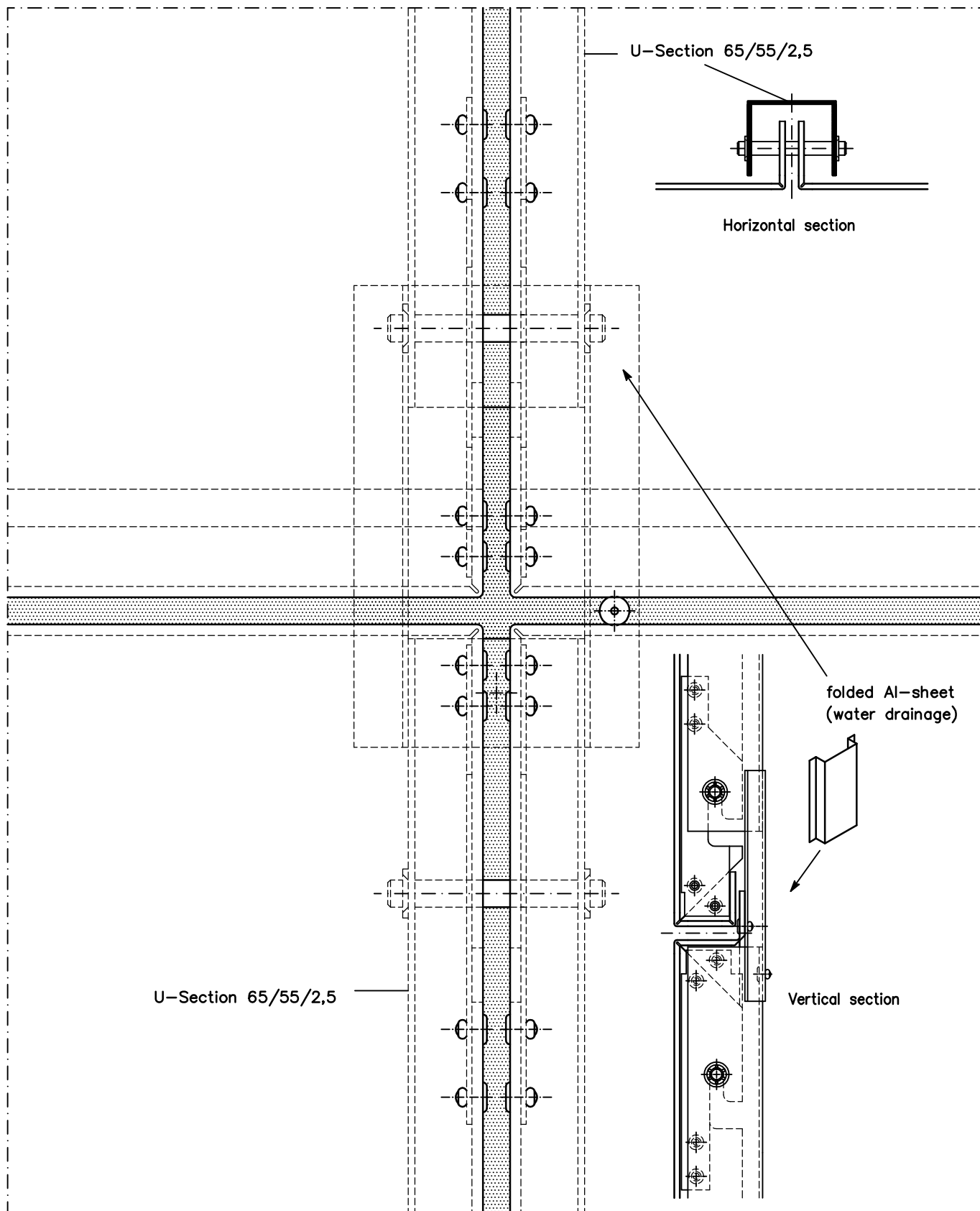
Werkstätte Liechtblick
Amsler–Laffon–Straße
CH–8200 Schaffhausen
Tel.: +41 (52) 631 20 61
Fax.: +41 (52) 631 20 62

Survey
Key elevation

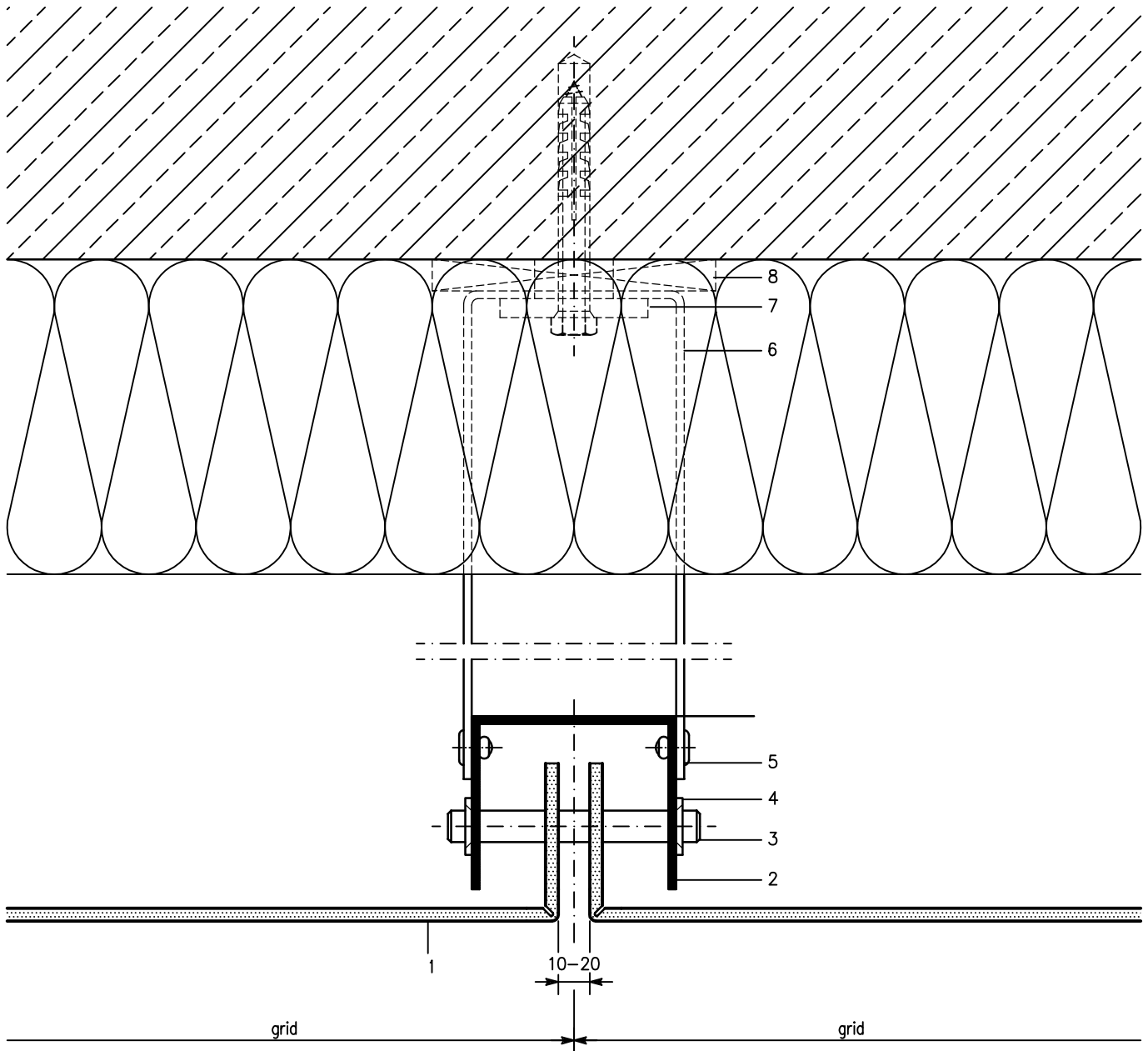


Vertical Panel Layout	3.2	Cross Joint/Elevation	
	3.10	Vertical joint	Section 1–1
	3.20	Horizontal joint	2–2
	3.30	Window head	3–3
	3.40	Window sill	4–4
	3.50	Window jamb	5–5
	3.60	Parapet return	6–6
	3.70	Lower cladding end	7–7
	3.80	Corner segment/Inner corner	8–8
	3.90	Corner segment/Outer corner	9–9

Cross Joint/Elevation Scale 1:2



Vertical Joint (Section 1-1) Scale 1:2

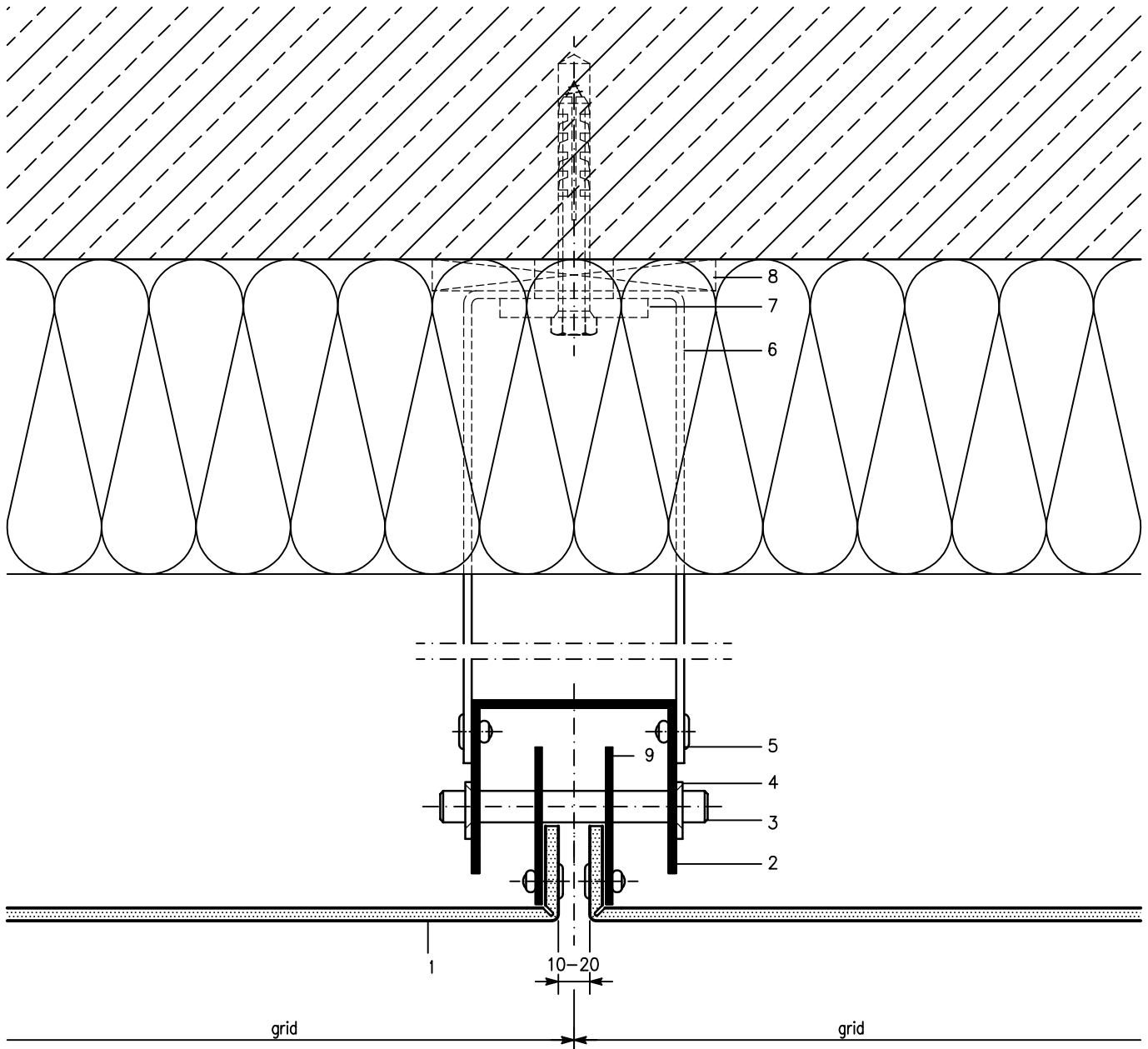


- 1 ALUCOBOND
- 2 U-Section 65/55/2,5
- 3* Stainless steel bolt, 10 mm dia.
- 4* STARLOCK quick fastener

- 5* Aluminium-blind rivet
- 6* Wall bracket
- 7 Extruded Al-liner
- 8* Plastic board (thermal separation)

* Available from competent dealer

Vertical Joint (Section 1-1) Scale 1:2



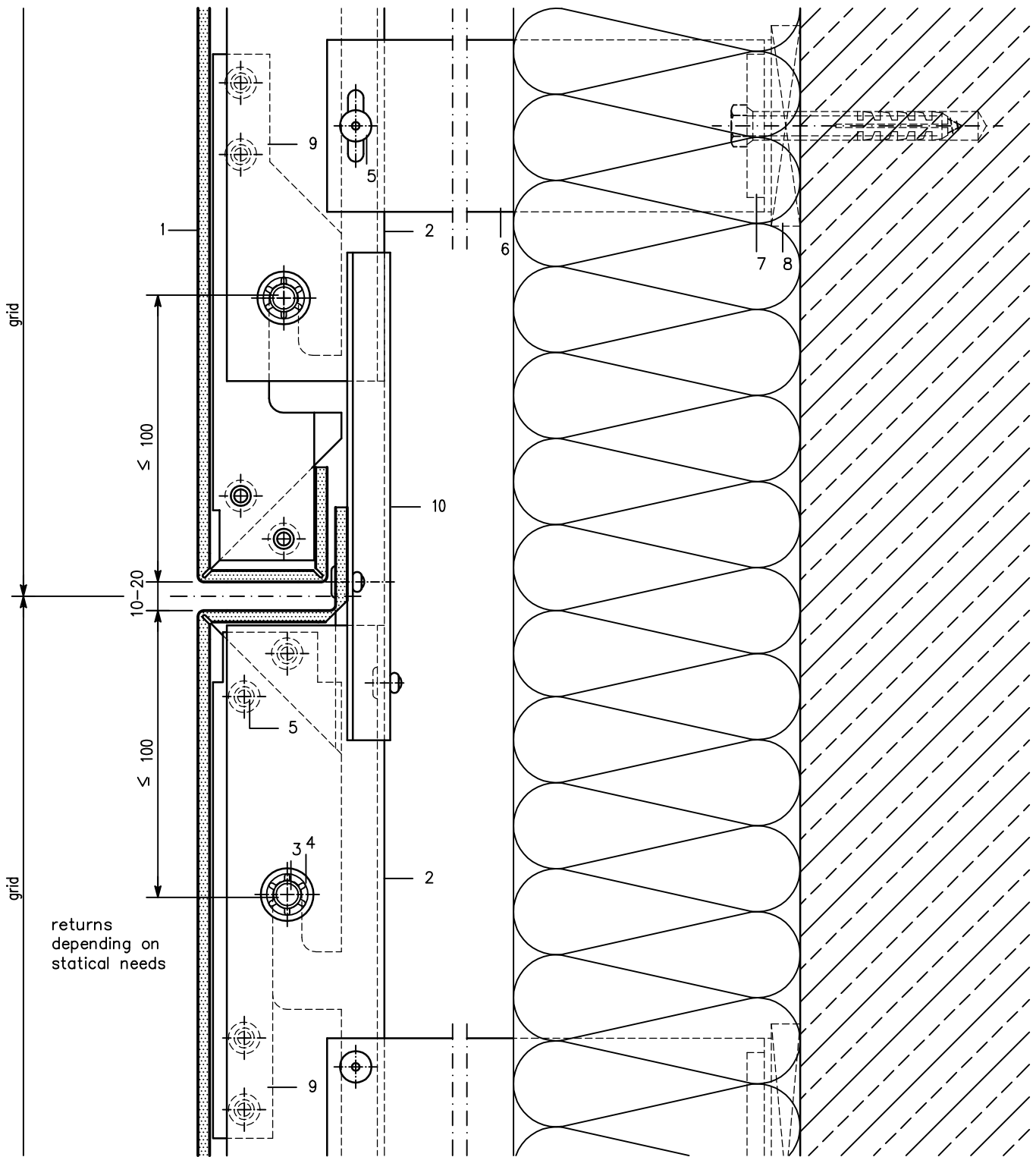
- 1 ALUCOBOND
- 2 U-Section 65/55/2,5
- 3* Stainless steel bolt, 10 mm dia.
- 4* STARLOCK quick fastener

- 5* Aluminium-blind rivet
- 6* Wall bracket
- 7 Extruded Al-liner
- 8* Plastic board (thermal separation)
- 9 Suspension-sheet, continuous

* Available from competent dealer

Fascia, suspended Tray Panels – Vertical Panel Layout

Horizontal Joint (Section 2-2) Scale 1:2

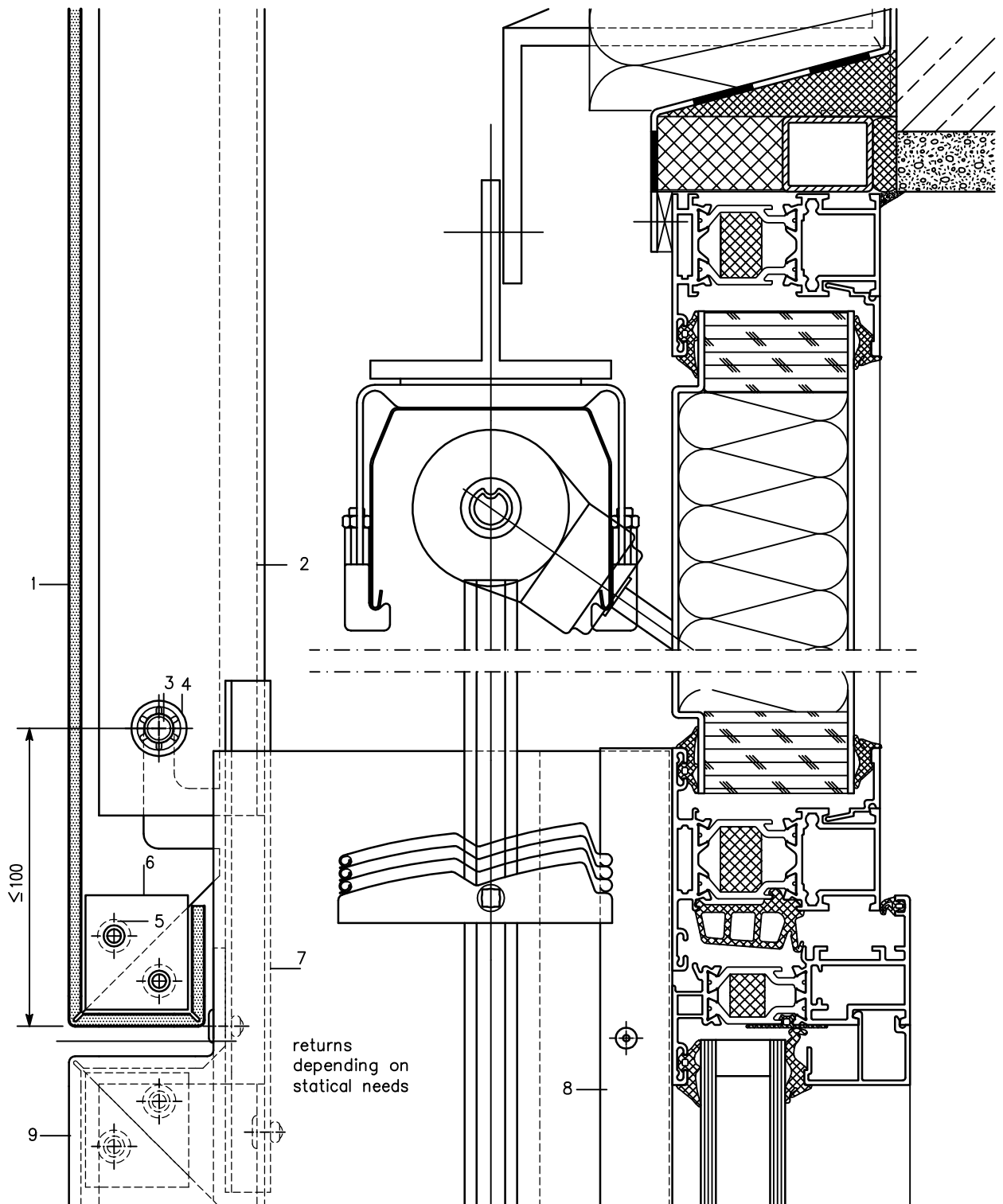


- 1 ALUCOBOND
- 2 U-Section 65/55/2,5
- 3* Stainless steel bolt, 10 mm dia.
- 4* STARLOCK quick fastener

- 5* Aluminium-blind rivet
- 6* Wall bracket
- 7 Extruded Al-liner
- 8* Plastic board (thermal separation)
- 9* Corner sheet
- 10 folded Al-sheet (water drainage)

* Available from competent dealer

Window Head (Section 3–3, Area of Reveal) Scale 1:2



1 ALUCOBOND

2 U-Section 65/55/2,5

3* Stainless steel bolt, 10 mm dia.

4* STARLOCK quick fastener

5* Aluminium-blind rivet

6* Corner sheet

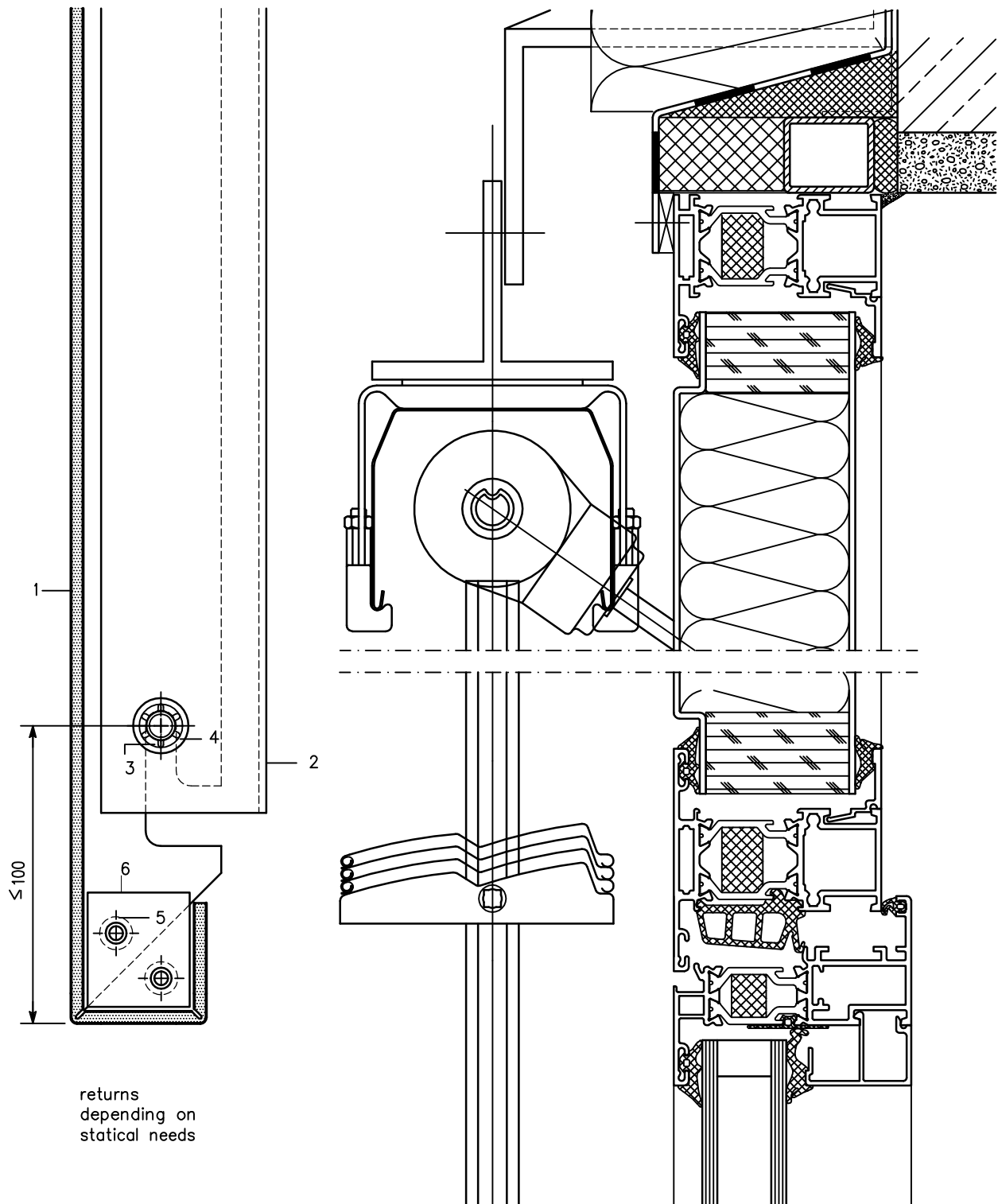
7 folded Al-sheet (water drainage)

8* Extruded window connecting section 38 464

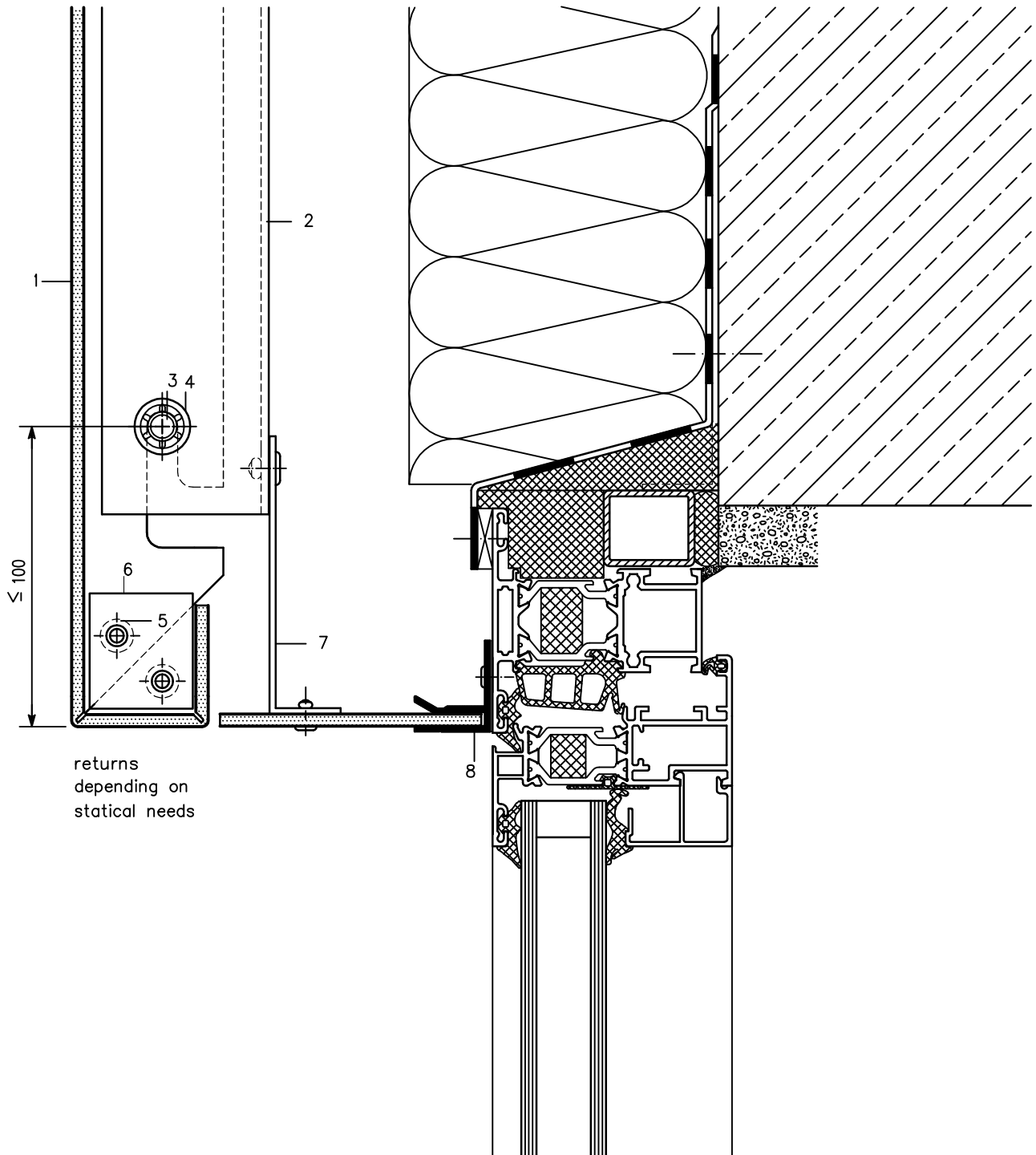
9 Reveal

* Available from competent dealer

Window Head (Section 3–3, Central Sector) Scale 1:2



Window Head (Section 3–3, Central Sector) Scale 1:2



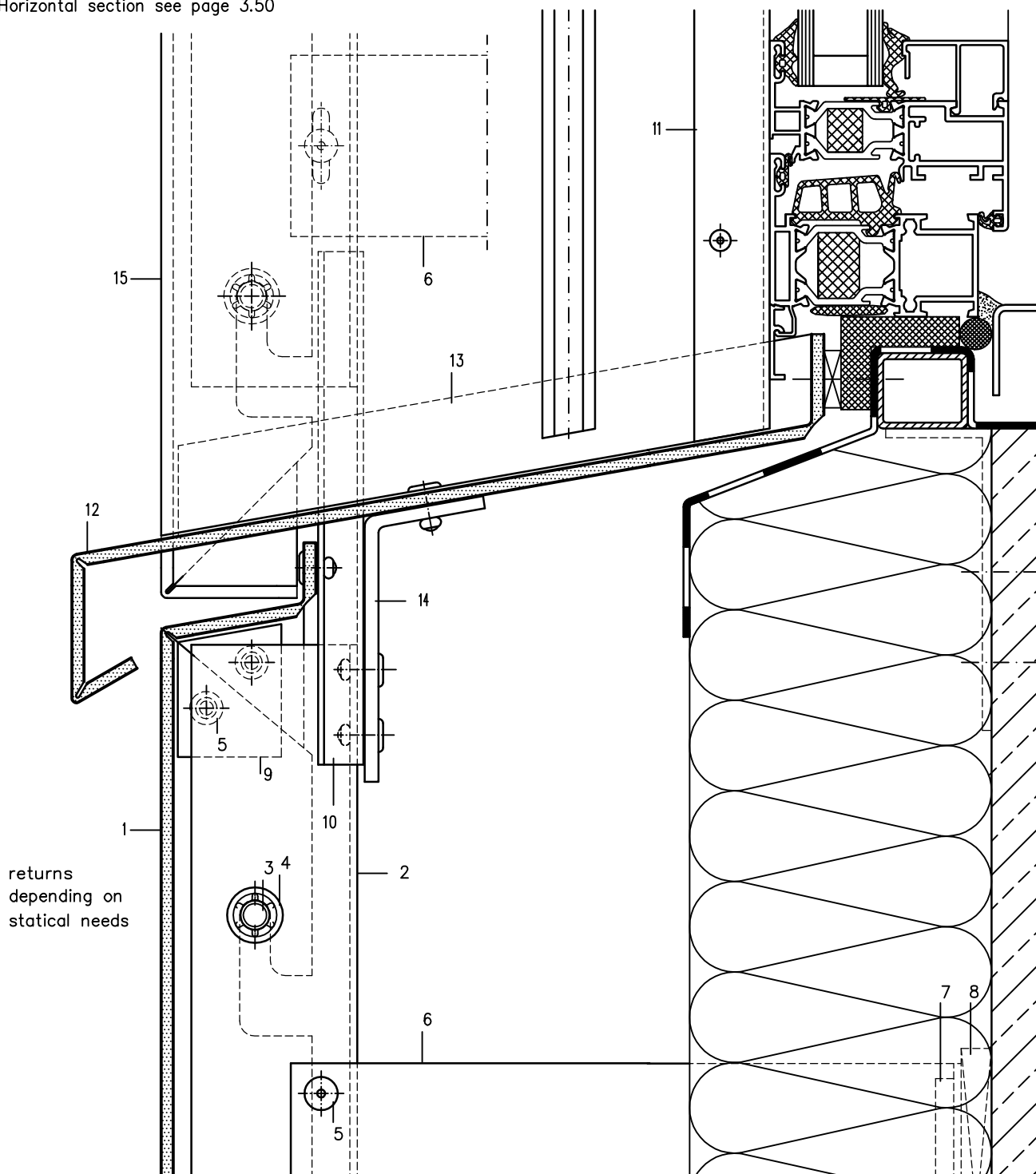
- 1 ALUCOBOND
- 2 U-Section 65/55/2,5
- 3* Stainless steel bolt, 10 mm dia.
- 4* STARLOCK quick fastener

- 5* Aluminium-blind rivet
- 6* Corner sheet
- 7 Extruded L-section (short piece)
- 8 Extruded window connecting section 38 464

* Available from competent dealer

Window Sill (Section 4–4, Area of Reveal) Scale 1:2

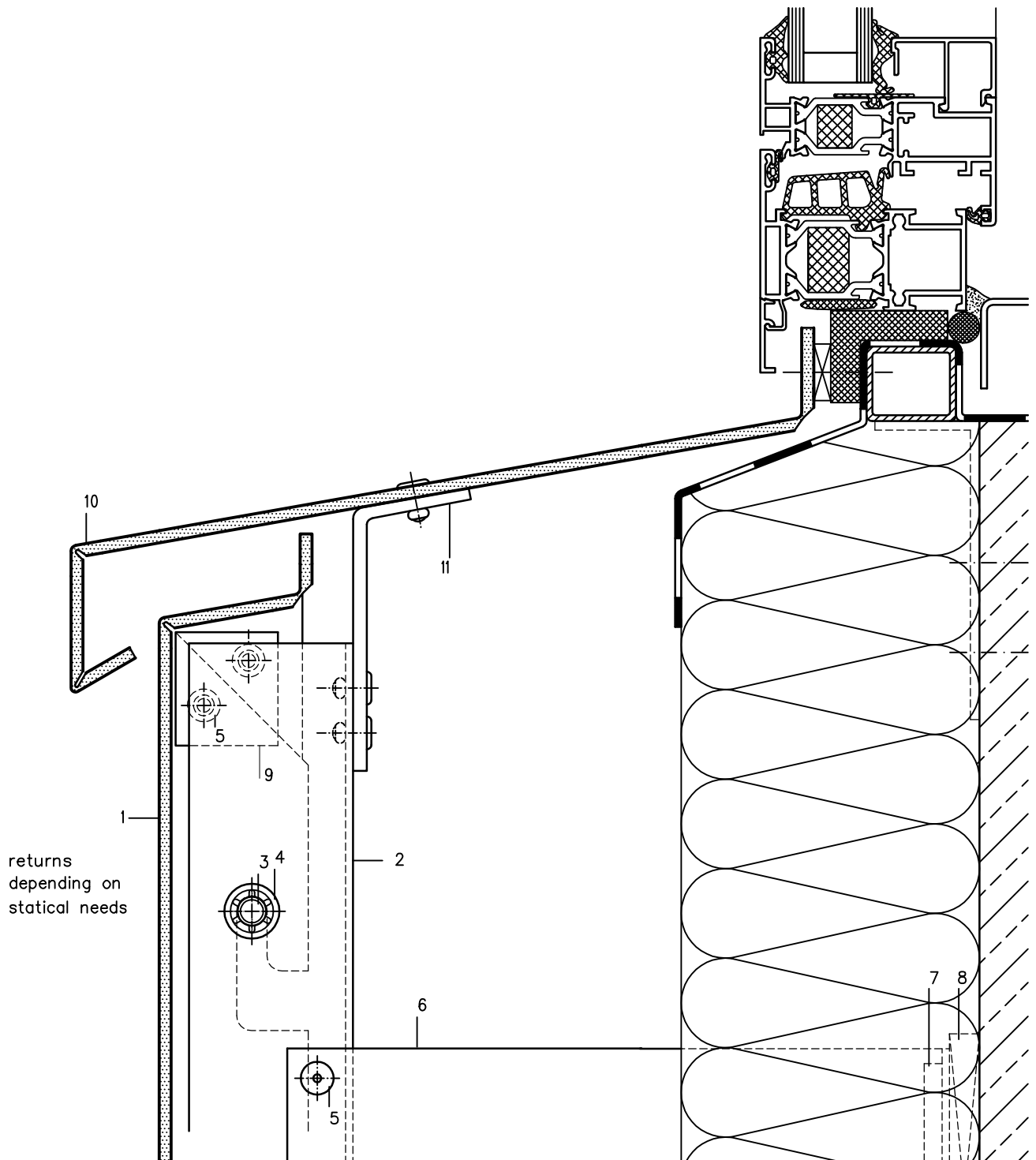
Horizontal section see page 3.50



- 1 ALUCOBOND
- 2 U-Section 65/55/2,5
- 3* Stainless steel bolt, 10 mm dia.
- 4* STARLOCK quick fastener
- 5* Aluminium-blind rivet
- 6* Wall bracket
- 7 Extruded Al-liner
- * Available from competent dealer

- 8* Plastic board (thermal separation)
- 9* Corner sheet
- 10 folded Al-sheet (water drainage)
- 11 Extruded window connecting section 38 464
- 12 ALUCOBOND window sill
- 13 ALUCOBOND side folding (window sill)
- 14 Fixing angle (Support for window sill)
- 15 Reveal

Window Sill (Section 4–4, Central Sector) Scale 1:2



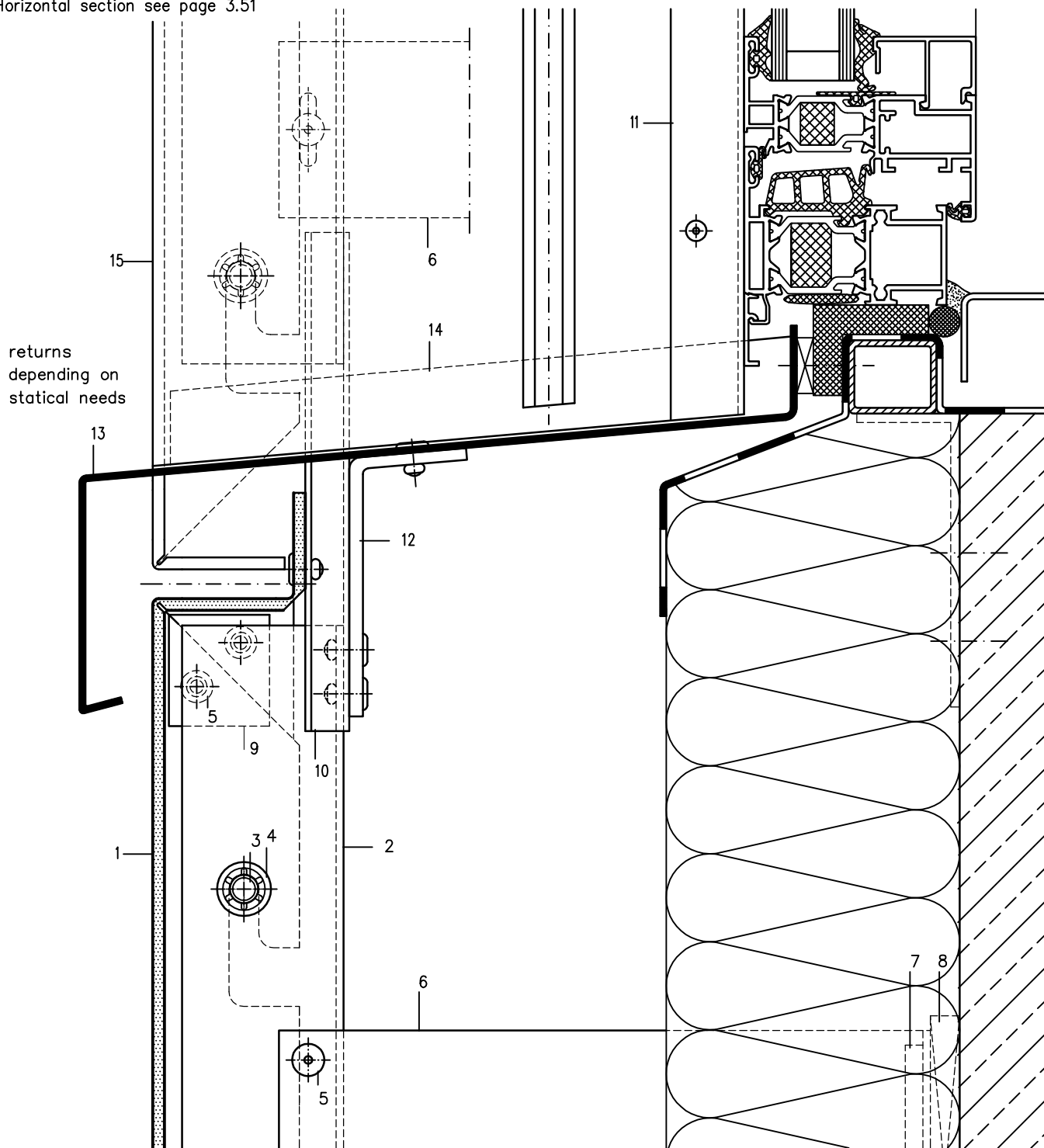
- 1 ALUCOBOND
- 2 U-Section 65/55/2,5
- 3* Stainless steel bolt, 10 mm dia.
- 4* STARLOCK quick fastener
- 5* Aluminium-blind rivet
- 6* Wall bracket

- 7 Extruded Al-liner
- 8* Plastic board (thermal separation)
- 9* Corner sheet
- 10 ALUCOBOND window sill
- 11 Fixing angle (Support for window sill)

* Available from competent dealer

Window Sill (Section 4–4, Area of Reveal) Scale 1:2

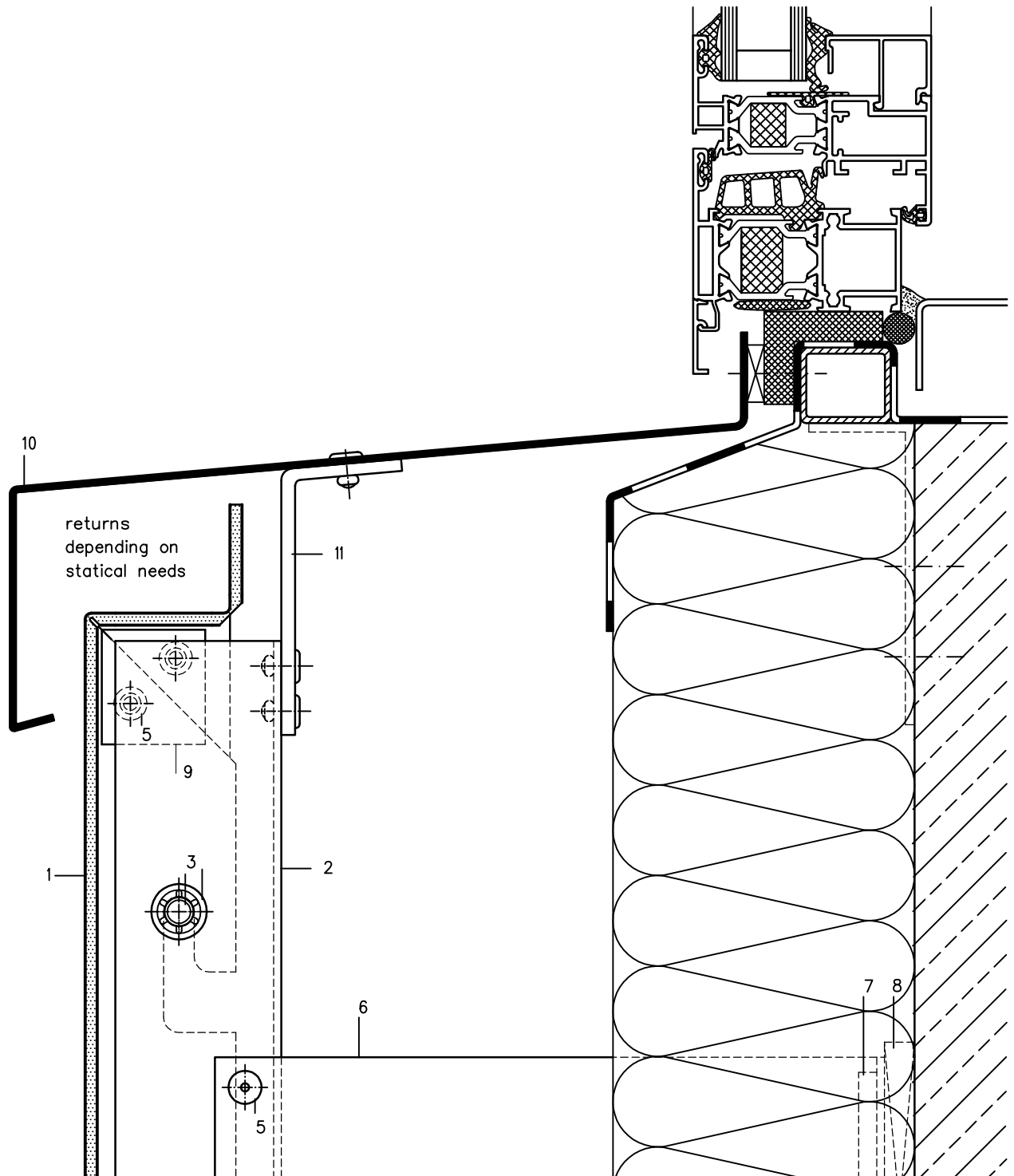
Horizontal section see page 3.51



- 1 ALUCOBOND
- 2 U-Section 65/55/2,5
- 3* Stainless steel bolt, 10 mm dia.
- 4* STARLOCK quick fastener
- 5* Aluminium-blind rivet
- 6* Wall bracket
- 7 Extruded Al-liner
- * Available from competent dealer

- 8* Plastic board (thermal separation)
- 9* Corner sheet
- 10 Folded Al-sheet (water drainage)
- 11 Extruded window connecting section 38 464
- 12 Fixing angle (Support for window sill)
- 13 Window sill-shaped aluminium sheet
- 14 Side folding (Window sill)
- 15 Reveal

Window Sill (Section 4–4, Central Sector) Scale 1:2



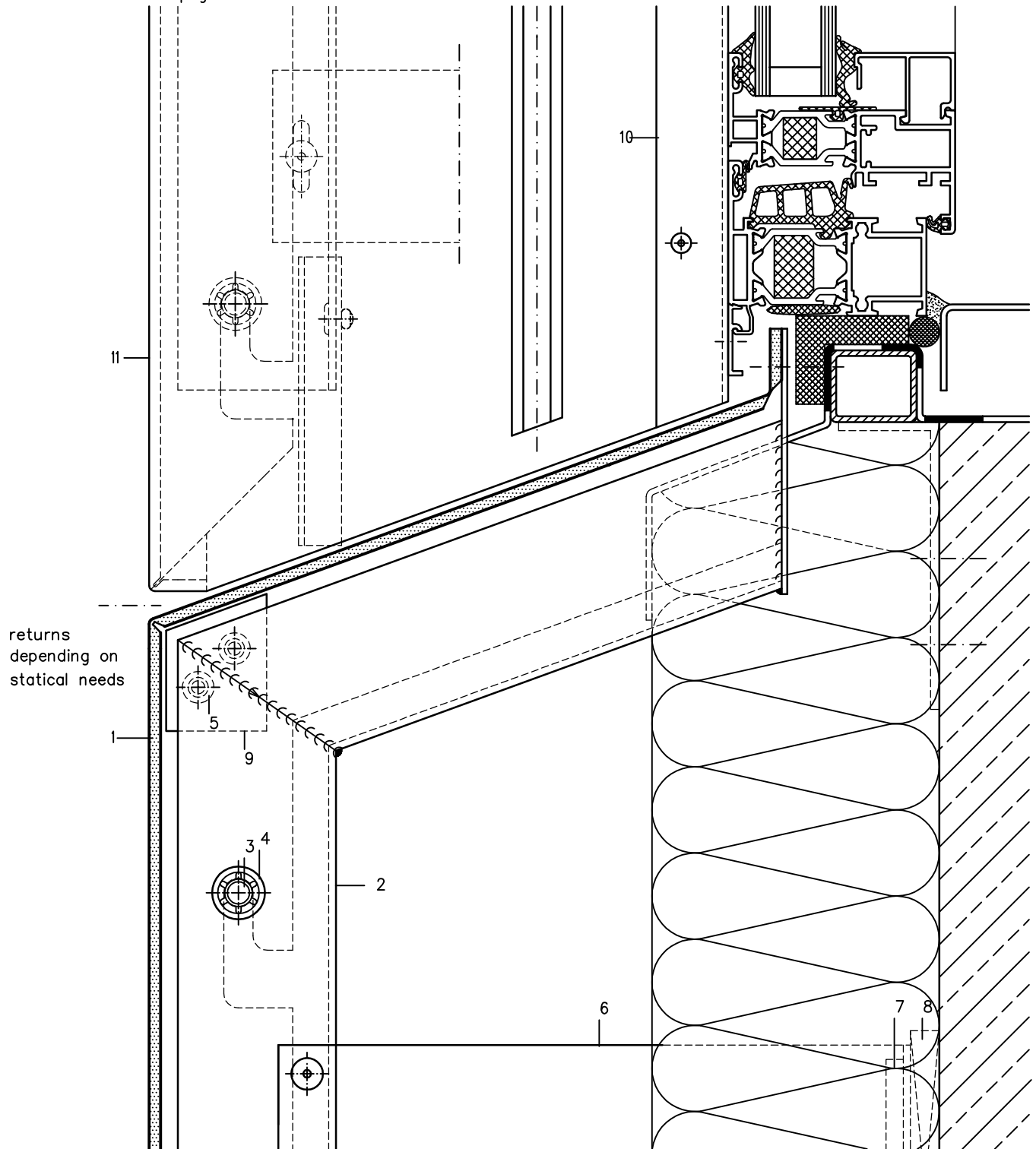
- 1 ALUCOBOND
- 2 U-Section 65/55/2,5
- 3* Stainless steel bolt, 10 mm dia.
- 4* STARLOCK quick fastener
- 5* Aluminium-blind rivet

- 6* Wall bracket
- 7 Extruded Al-liner
- 8* Plastic board (thermal separation)
- 9* Corner sheet
- 10 Window sill-shaped aluminium sheet
- 11 Fixing angle (Support for window sill)

* Available from competent dealer

Window Sill (Section 4–4, Area of Reveal) Scale 1:2

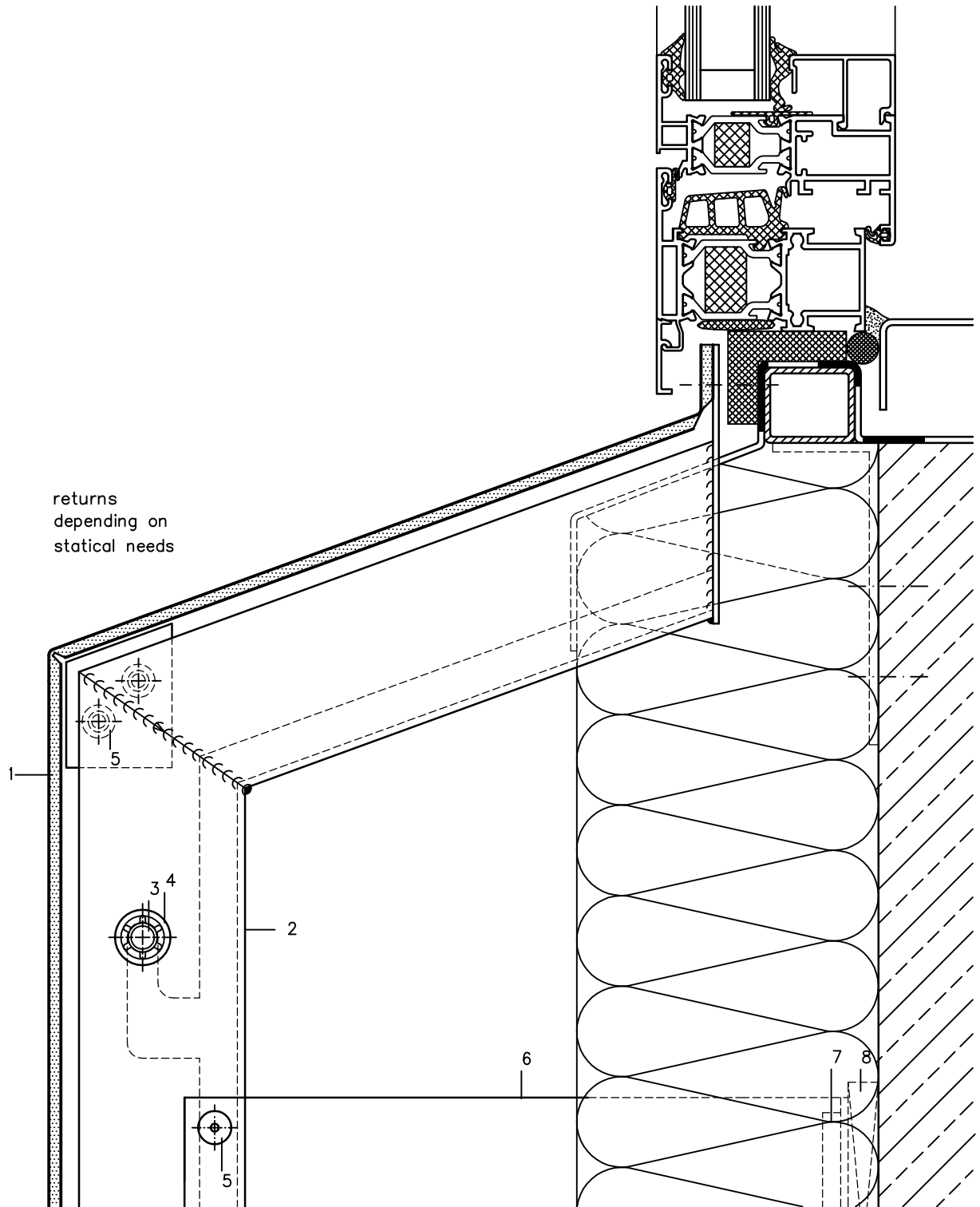
Horizontal section see page 3.52



- 1 ALUCOBOND
- 2 U-Section 65/55/2,5
- 3* Stainless steel bolt, 10 mm dia.
- 4* STARLOCK quick fastener
- 5* Aluminium-blind rivet
- * Available from competent dealer

- 6* Wall bracket
- 7 Extruded Al-liner
- 8* Plastic board (thermal separation)
- 9* Corner sheet
- 10 Extruded window connecting section 38 464
- 11 Reveal

Window Sill (Section 4–4, Central Sector) Scale 1:2

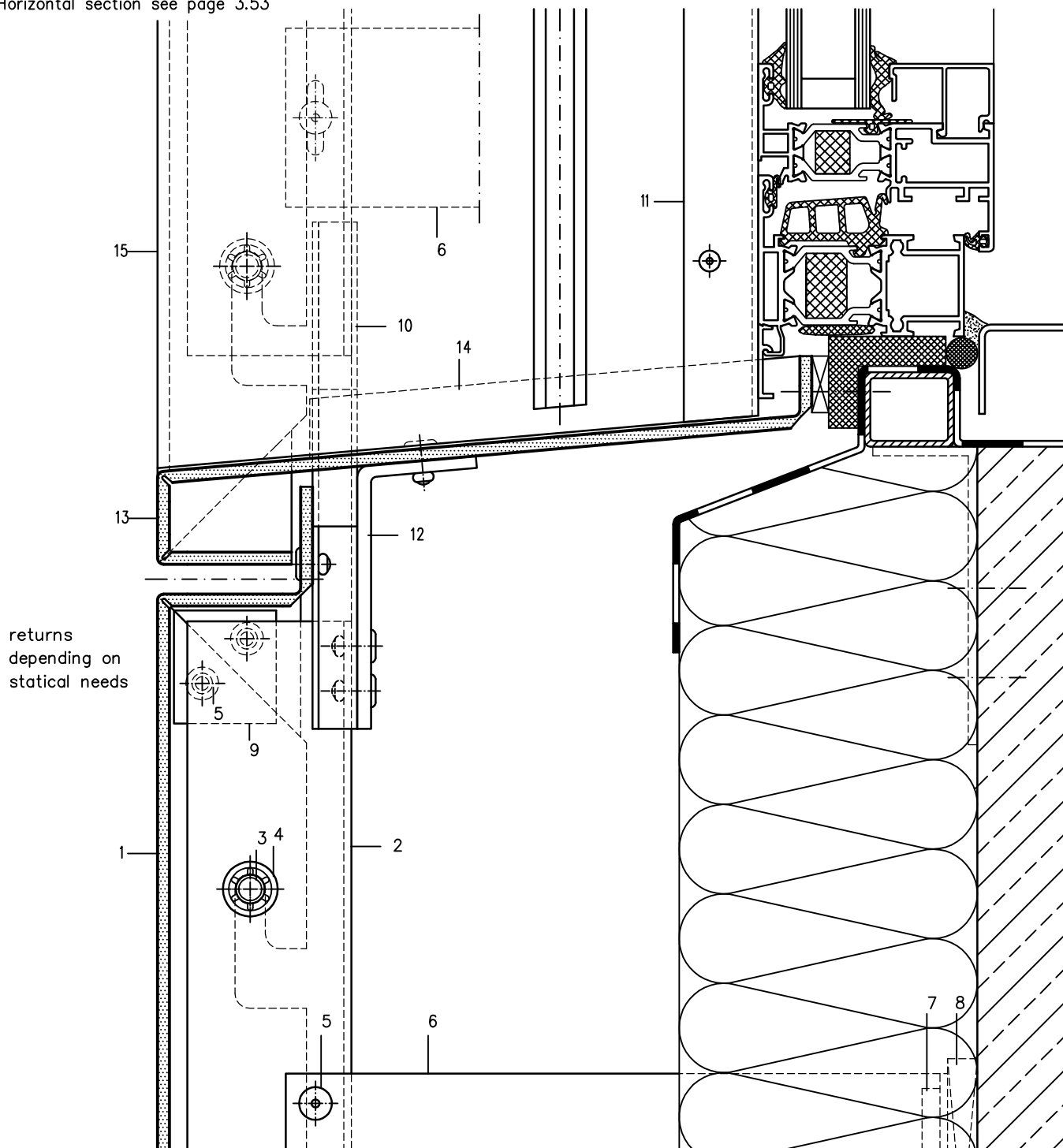


- 1 ALUCOBOND
- 2 U-Section 65/55/2,5
- 3* Stainless steel bolt, 10 mm dia.
- 4* STARLOCK quick fastener
- 5* Aluminium-blind rivet
- * Available from competent dealer

- 6* Wall bracket
- 7 Extruded Al-liner
- 8* Plastic board (thermal separation)

Window Sill (Section 4–4, Area of Reveal) Scale 1:2

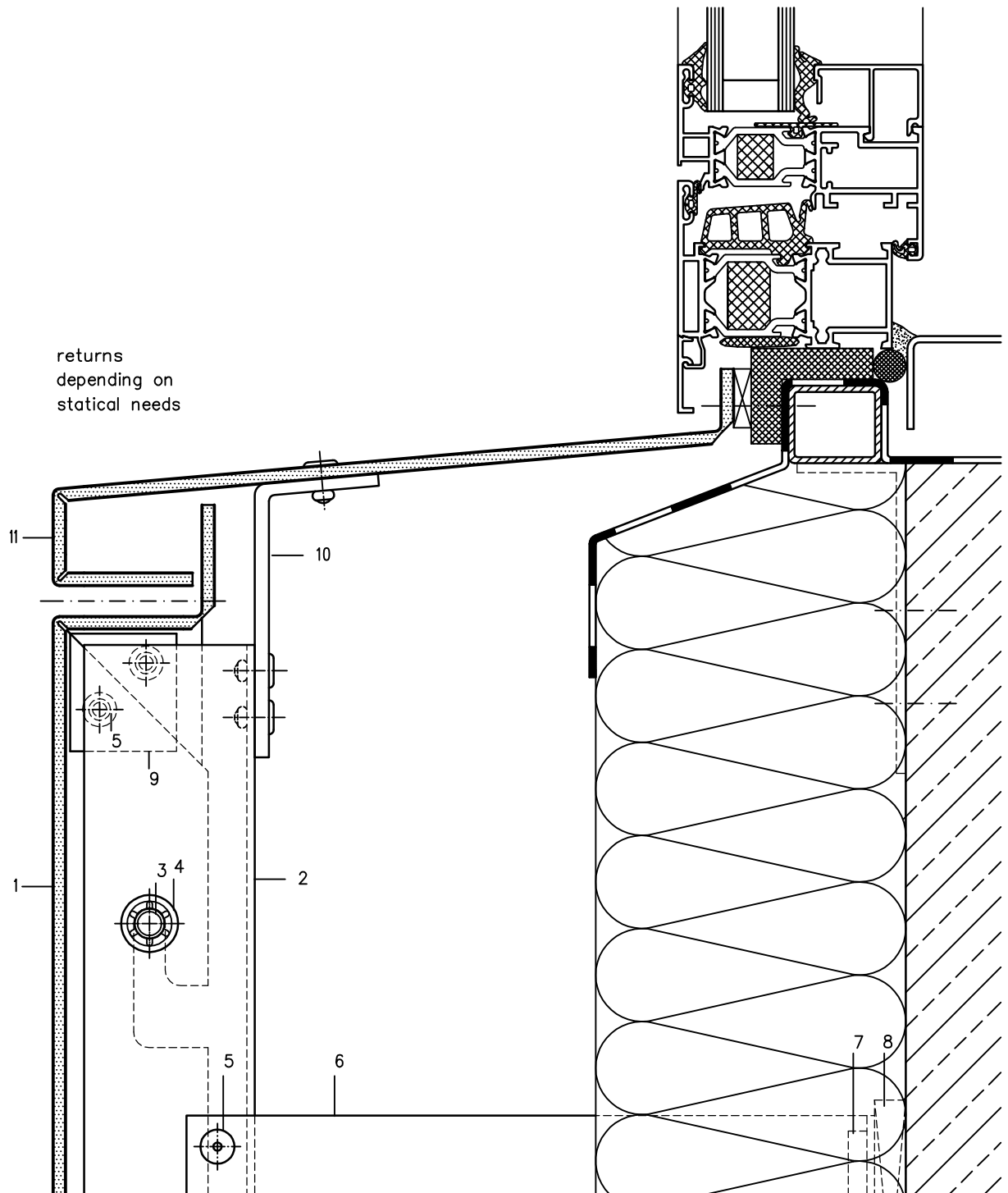
Horizontal section see page 3.53



- 1 ALUCOBOND
- 2 U-Section 65/55/2,5
- 3* Stainless steel bolt, 10 mm dia.
- 4* STARLOCK quick fastener
- 5* Aluminium-blind rivet
- 6* Wall bracket
- 7 Extruded Al-liner
- * Available from competent dealer

- 8* Plastic board (thermal separation)
- 9* Corner sheet
- 10 Folded Al-sheet (water drainage)
- 11 Extruded window connecting section 38 464
- 12 Fixing angle (Support for window sill)
- 13 ALUCOBOND window sill
- 14 ALUCOBOND side folding (window sill)
- 15 Reveal

Window Sill (Section 4–4, Central Sector) Scale 1:2

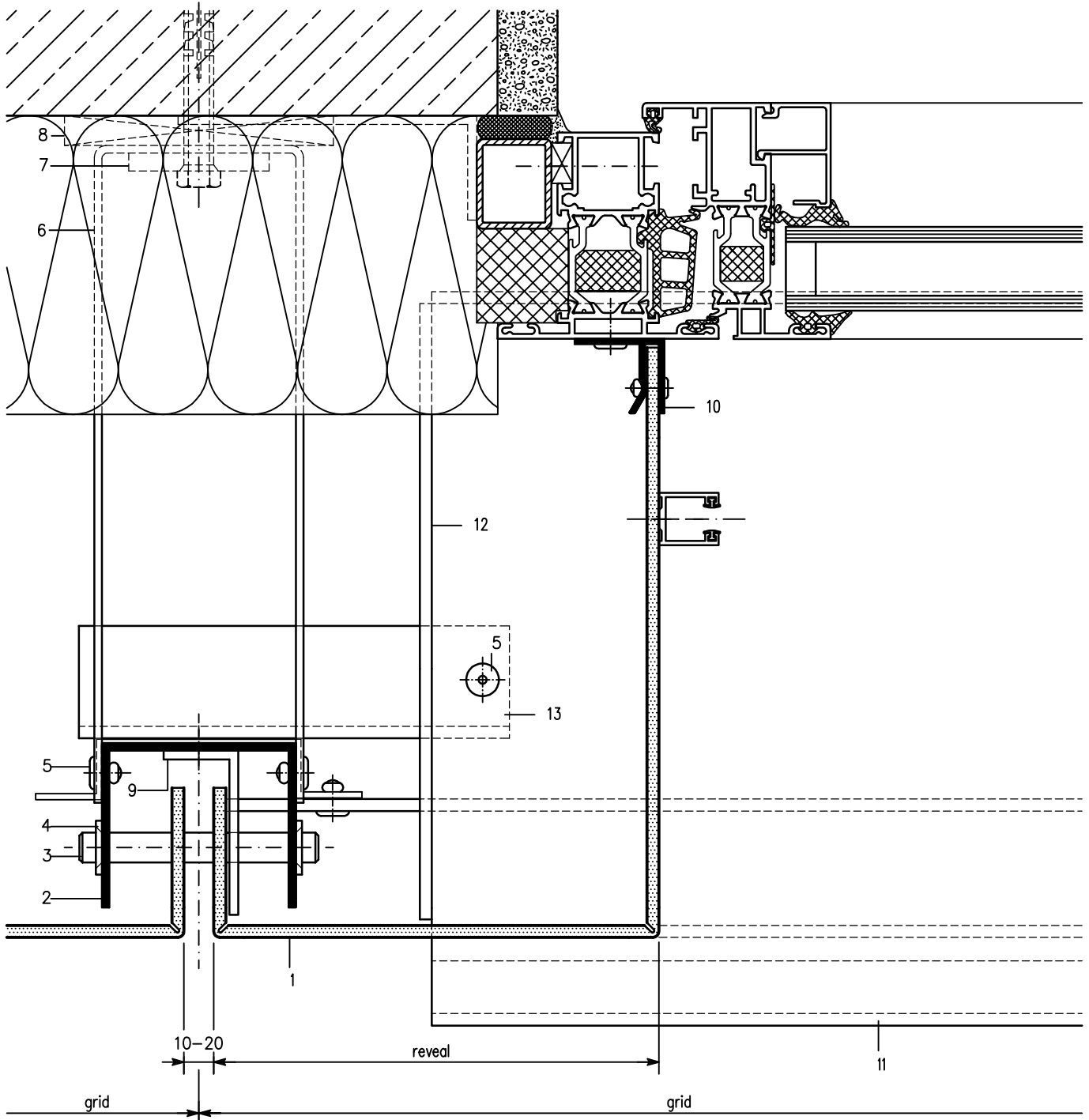


- 1 ALUCOBOND
- 2 U-Section 65/55/2,5
- 3* Stainless steel bolt, 10 mm dia.
- 4* STARLOCK quick fastener
- 5* Aluminium-blind rivet
- 6* Wall bracket
- 7 Extruded Al-liner
- * Available from competent dealer

- 8* Plastic board (thermal separation)
- 9* Corner sheet
- 10 Fixing angle (Support for window sill)
- 11 ALUCOBOND window sill

Window Jamb (Section 5–5) Scale 1:2

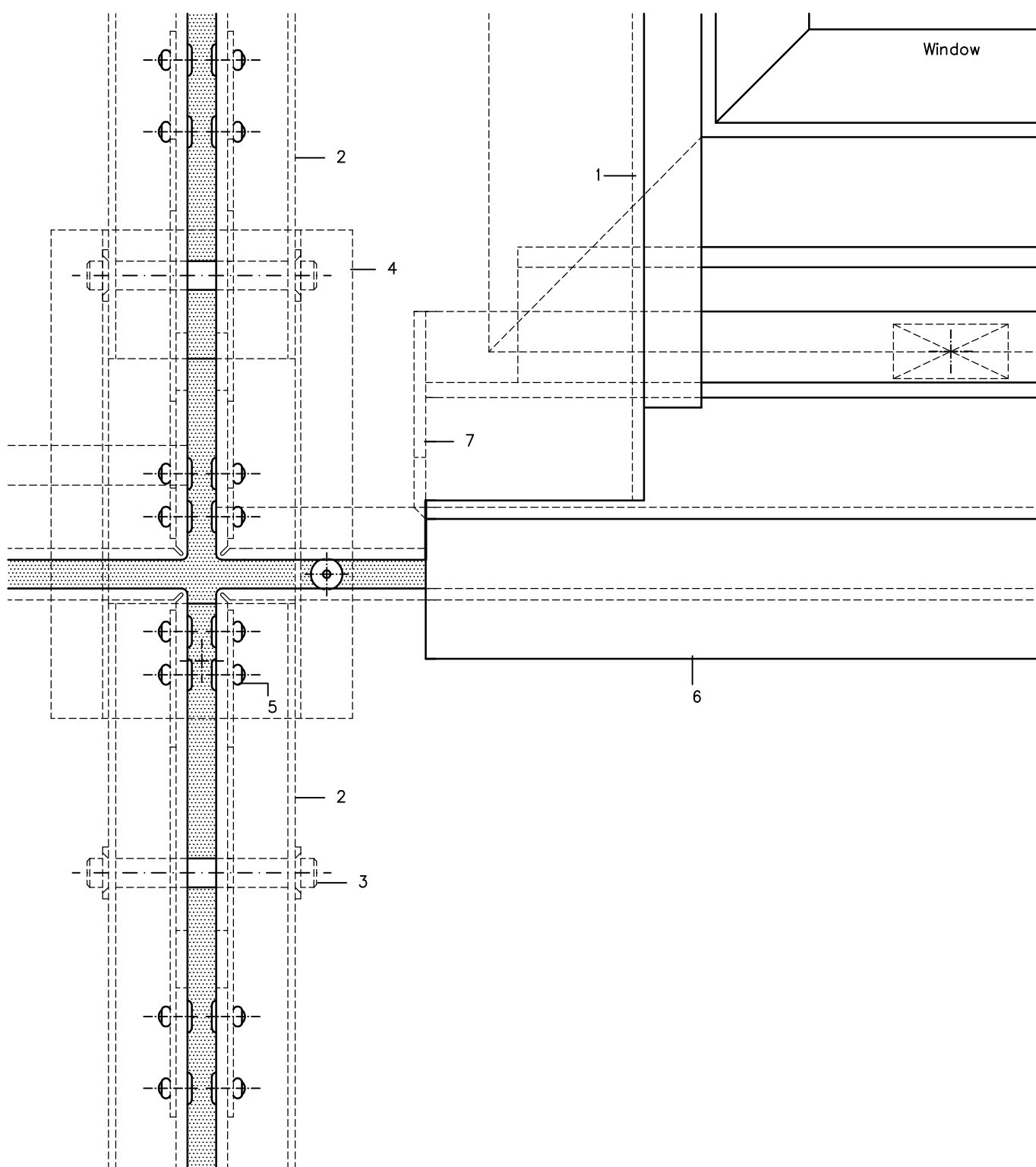
Vertical section see page 3.40



- 1 ALUCOBOND
- 2 U-Section 65/55/2,5
- 3* Stainless steel bolt, 10 mm dia.
- 4* STARLOCK quick fastener
- 5* Aluminium-blind rivet
- 6* Wall bracket
- * Available from competent dealer

- 7 Extruded Al-liner
- 8* Plastic board (thermal separation)
- 9 Extruded L-section (short piece) to fix the reveal
- 10 Extruded window connecting section 38 464
- 11 ALUCOBOND window sill
- 12 ALUCOBOND side folding (window sill)
- 13 Fixing angle (Support for window sill)

Front Elevation (Window Sill) for page 3.50 Scale 1:2



1 ALUCOBOND

2 U-Section 65/55/2,5

3* Stainless steel bolt, 10 mm dia.

4* Folded Al-sheet (water drainage)

5* Aluminium-blind rivet

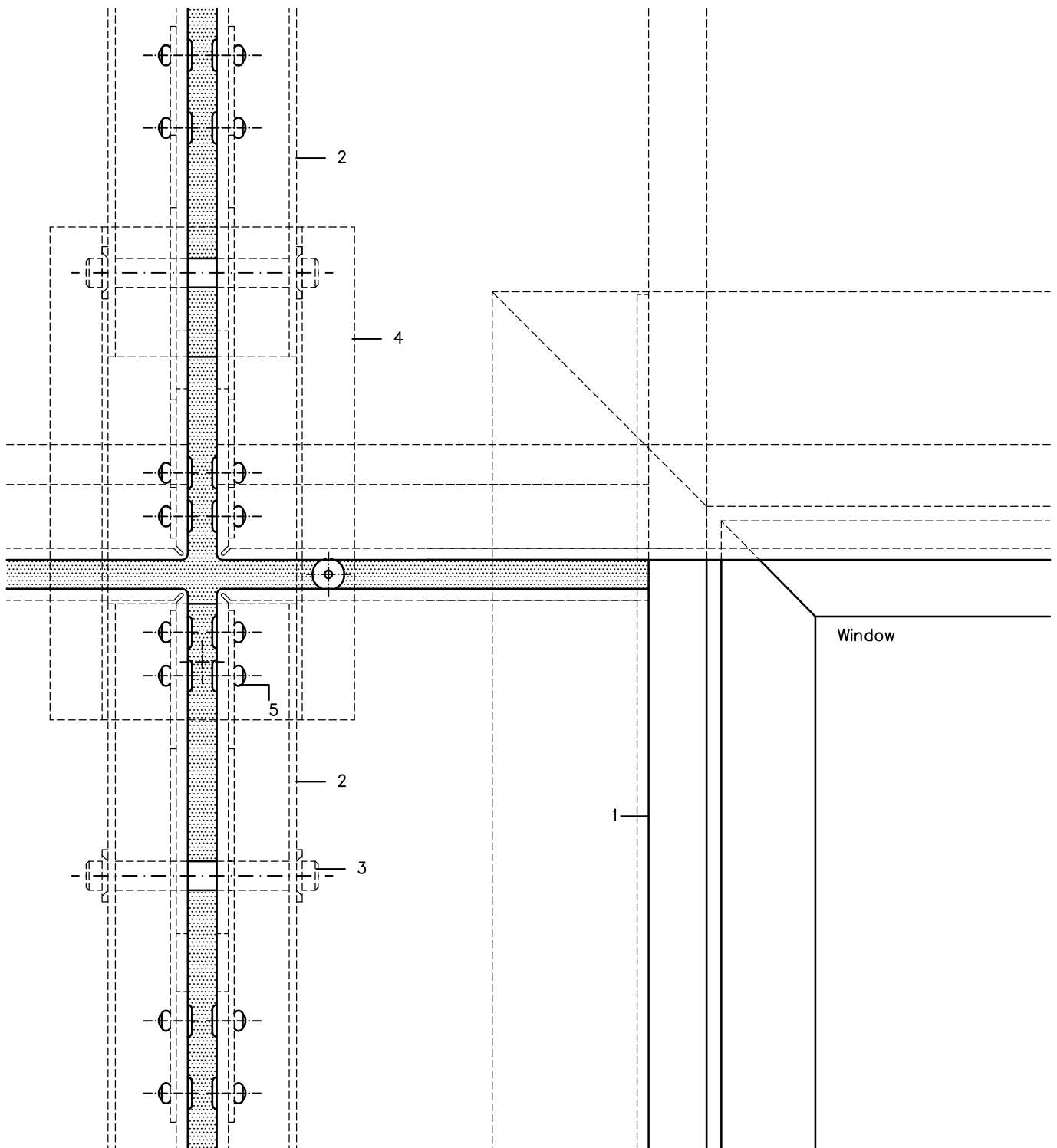
6 ALUCOBOND window sill

7 ALUCOBOND window sill (side folding)

* Available from competent dealer

Fascia, suspended Tray Panels – Vertical Panel Layout

Front Elevation (Window Head) for page 3.50 Scale 1:2



1 ALUCOBOND

2 U-Section 65/55/2,5

3* Stainless steel bolt, 10 mm dia.

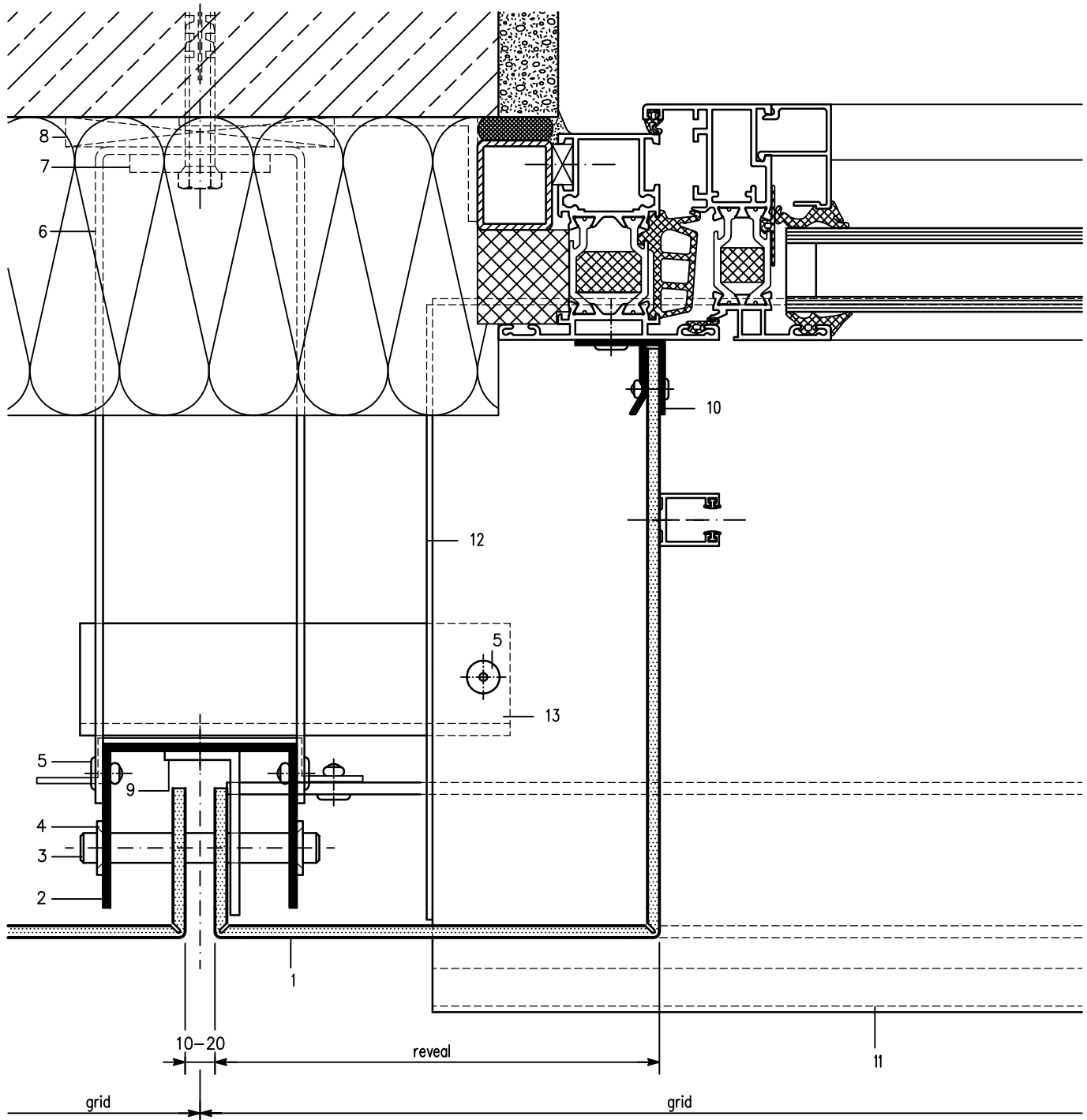
4* Folded Al-sheet (water drainage)

5* Aluminium-blind rivet

* Available from competent dealer

Window Jamb (Section 5–5) Scale 1:2

Vertical section see page 3.41



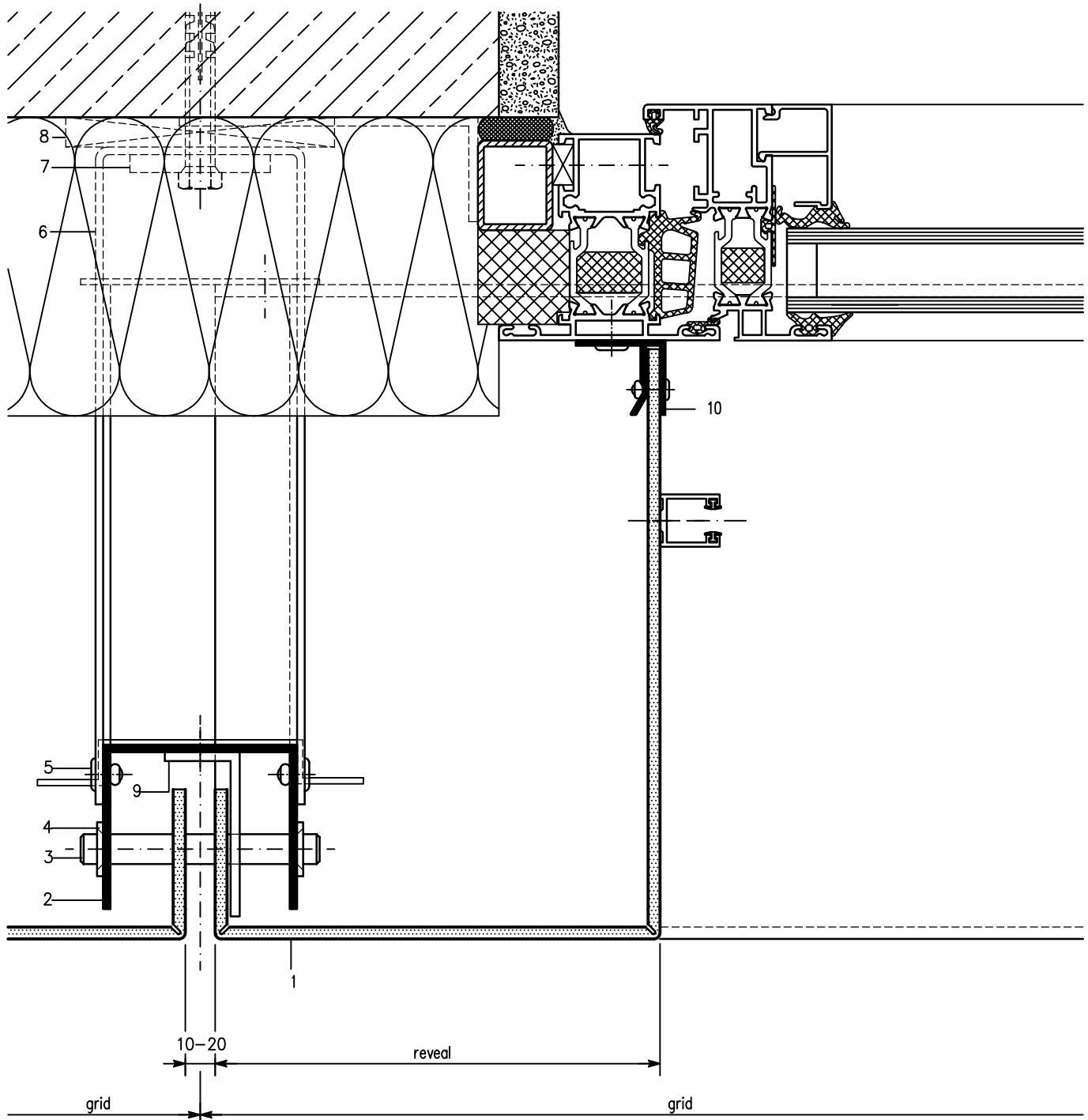
- 1 ALUCOBOND
- 2 U-Section 65/55/2,5
- 3* Stainless steel bolt, 10 mm dia.
- 4* STARLOCK quick fastener
- 5* Aluminium-blind rivet
- 6* Wall bracket

- 7 Extruded Al-liner
- 8* Plastic board (thermal separation)
- 9 Extruded L-section (short piece) to fix the reveal
- 10 Extruded window connecting section 38 464
- 11* Window sill-shaped aluminium sheet
- 12 Side folding-shaped Al-sheet (window sill)
- 13 Support for window sill

* Available from competent dealer

Window Jamb (Section 5–5) Scale 1:2

Vertical section see page 3.42



1 ALUCOBOND

2 U-Section 65/55/2,5

3* Stainless steel bolt, 10 mm dia.

4* STARLOCK quick fastener

5* Aluminium-blind rivet

6* Wall bracket

7 Extruded Al-liner

8* Plastic board (thermal separation)

9 Extruded L-section (short piece) to fix the reveal

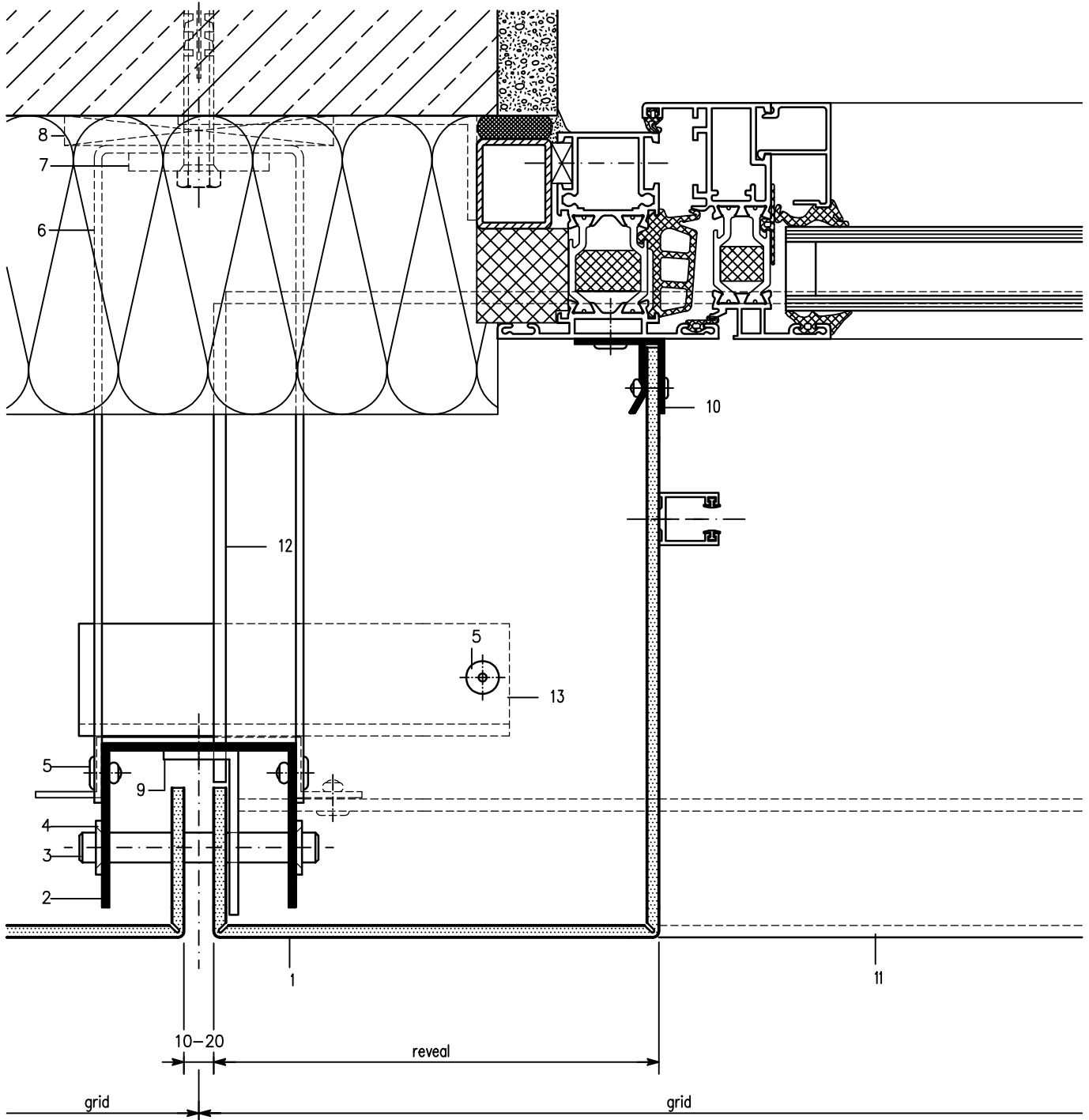
10 Extruded window connecting section 38 464

* Available from competent dealer

Product changes in the sense of a technical progress are reserved. All advice recommendation and information is given to the best of our knowledge but without any obligation on our part. 11.04

Window Jamb (Section 5–5) Scale 1:2

Vertical section see page 3.43



- 1 ALUCOBOND
- 2 U-Section 65/55/2,5
- 3* Stainless steel bolt, 10 mm dia.
- 4* STARLOCK quick fastener
- 5* Aluminium-blind rivet
- 6* Wall bracket

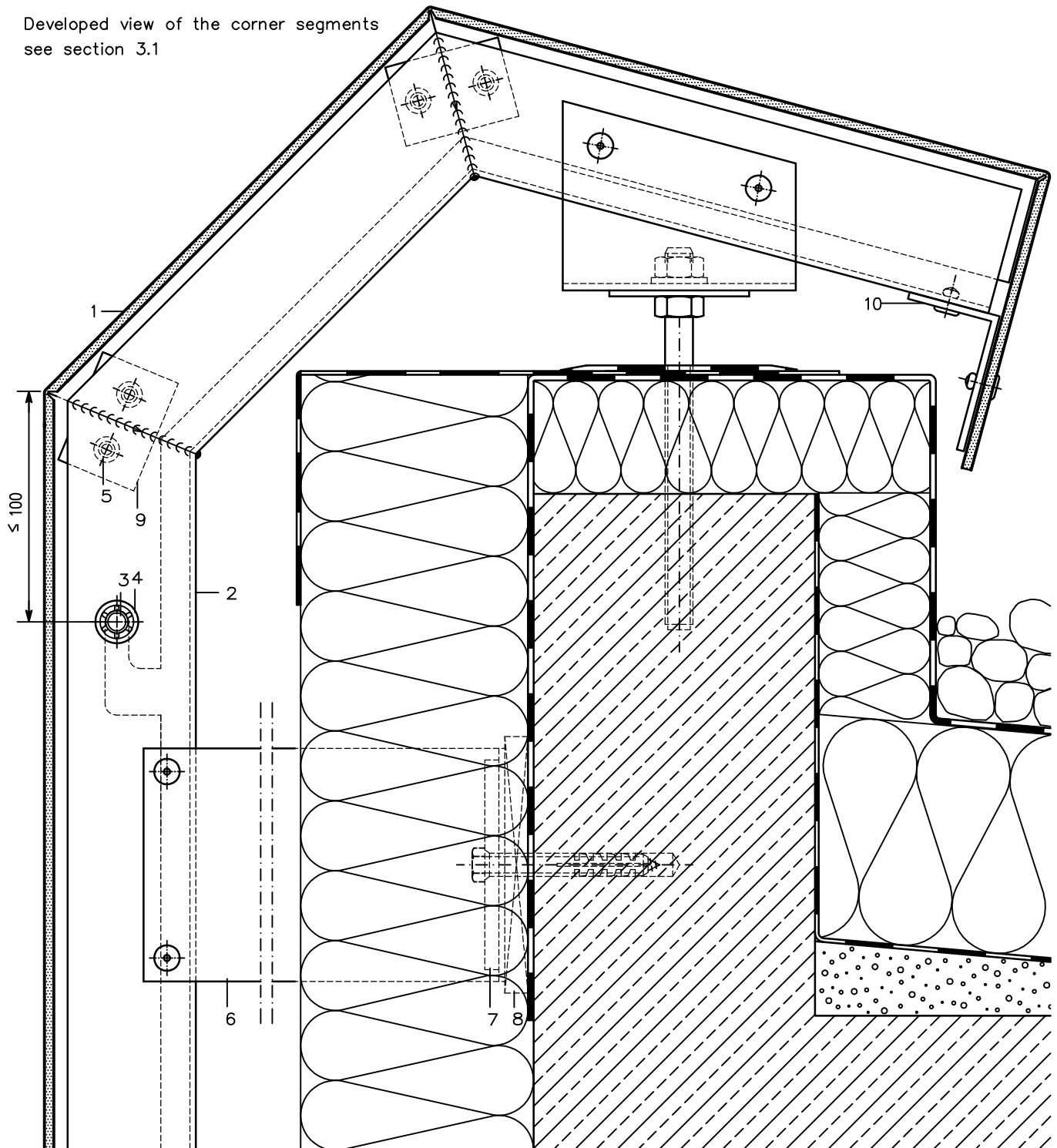
- 7 Extruded Al-liner
- 8* Plastic board (thermal separation)
- 9 Extruded L-section (short piece) to fix the reveal
- 10 Extruded window connecting section 38 464
- 11 ALUCOBOND window sill
- 12 ALUCOBOND side folding (window sill)
- 13 Support for window sill

* Available from competent dealer

Product changes in the sense of a technical progress are reserved. All advice recommendation and information is given to the best of our knowledge but without any obligation on our part. 11.04

Parapet Return (Section 6–6) Scale 1:2,5

Developed view of the corner segments
see section 3.1



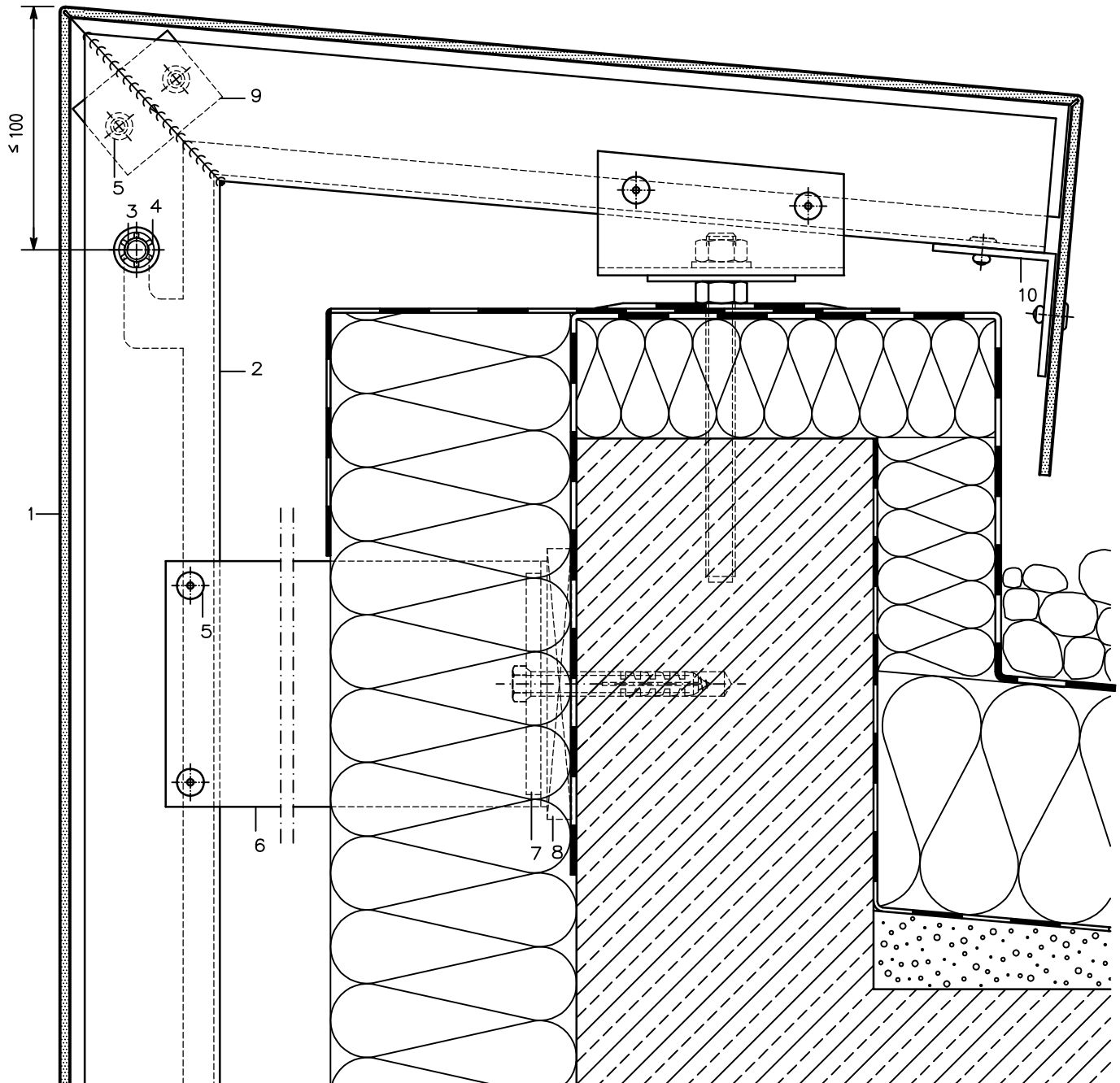
- 1 ALUCOBOND
- 2 U-Section 65/55/2,5
- 3* Stainless steel bolt, 10 mm dia.
- 4* STARLOCK quick fastener

- 5* Aluminium-blind rivet
- 6* Wall bracket
- 7 Extruded Al-liner
- 8* Plastic board (thermal separation)
- 9* Corner sheet
- 10 Fixing angle

* Available from competent dealer

Parapet Return (Section 6–6) Scale 1:2,5

Developed view of the corner segments
see section 3.1

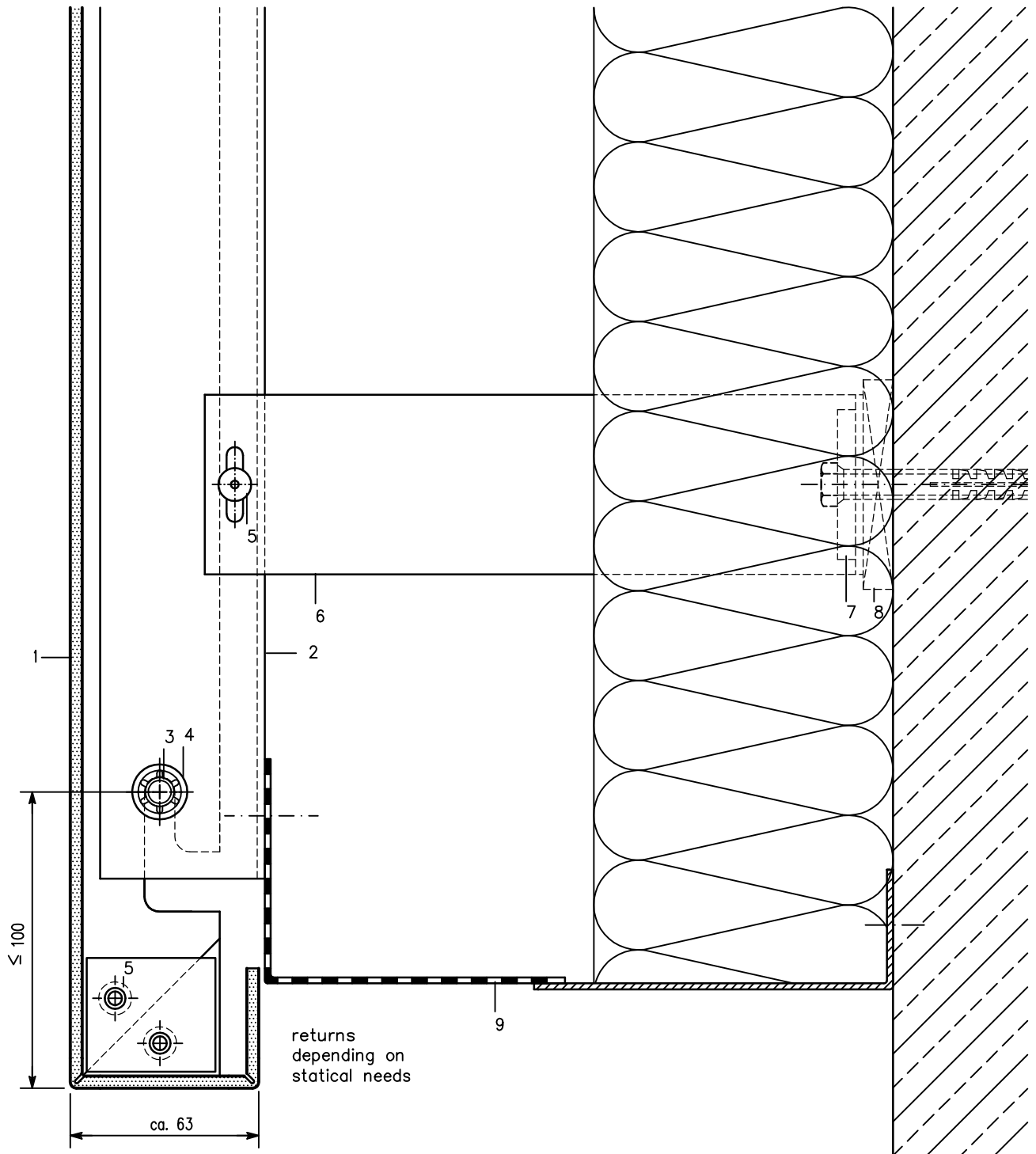


- 1 ALUCOBOND
- 2 U-Section 65/55/2,5
- 3* Stainless steel bolt, 10 mm dia.
- 4* STARLOCK quick fastener

- 5* Aluminium-blind rivet
- 6* Wall bracket
- 7 Extruded Al-liner
- 8* Plastic board (thermal separation)
- 9* Corner sheet
- 10 Fixing angle

* Available from competent dealer

Lower Cladding End (Section 7–7) Scale 1:2

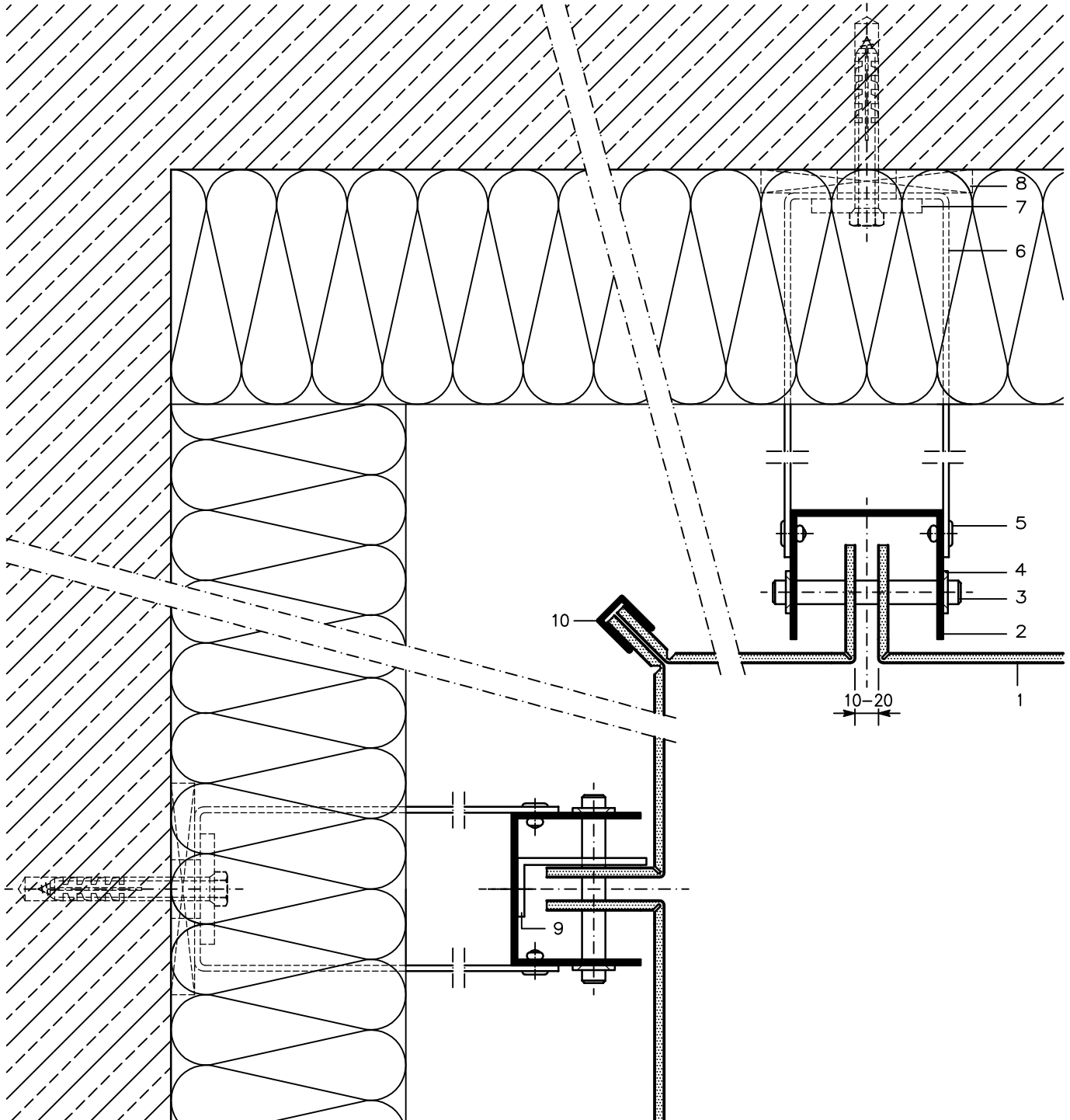


- 1 ALUCOBOND
- 2 U-Section 65/55/2,5
- 3* Stainless steel bolt, 10 mm dia.
- 4* STARLOCK quick fastener

- 5* Aluminium-blind rivet
- 6* Wall bracket
- 7 Extruded Al-liner
- 8* Plastic board (thermal separation)
- 9* Ventilating section/perforated sheet

* Available from competent dealer

Corner Segment/Inner Corner (Section 8–8) Scale 1:2,5

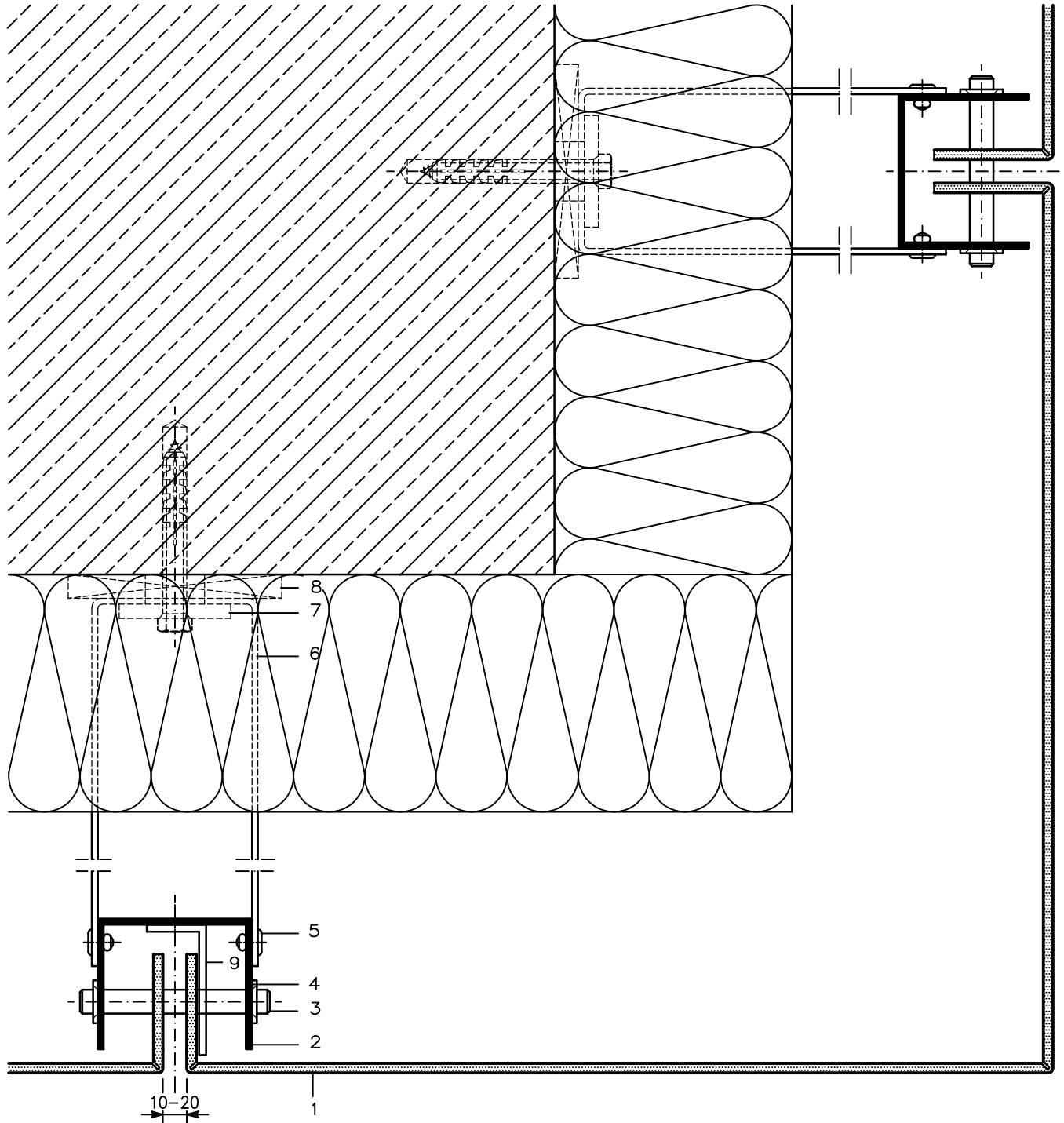


- 1 ALUCOBOND
- 2 U-Section 65/55/2,5
- 3* Stainless steel bolt, 10 mm dia.
- 4* STARLOCK quick fastener

- 5* Aluminium-blind rivet
- 6* Wall bracket
- 7 Extruded Al-liner
- 8* Plastic board (thermal separation)
- 9 Extruded L-section (short piece)
to fix the corner element
- 10 Extruded edge section 24 569

* Available from competent dealer

Corner Segment/Outer Corner (Section 9–9) Scale 1:2,5



- 1 ALUCOBOND
- 2 U-Section 65/55/2,5
- 3* Stainless steel bolt, 10 mm dia.
- 4* STARLOCK quick fastener

- 5* Aluminium-blind rivet
- 6* Wall bracket
- 7 Extruded Al-liner
- 8* Plastic board (thermal separation)
- 9 Extruded L-section (short piece) to fix the corner element

* Available from competent dealer